

Berger Realty

Since 1926



Berger Realty, Inc
1330 Bay Avenue
Ocean City, NJ 08226
609-391-1330/609-391-1300
info@bergerrealty.com



2020 Murray, Atlantic City, NJ, 08401

Price \$100,000.00

PROPERTY DETAILS

Total Rooms	0
Bedrooms	0
Baths Full	0
Baths Half	0
Year Built	
Type	
Block Number	728
Listing #	595519
Taxes	2468.00

COMMENTS

Welcome to 2020 Murray Avenue – a rare and exciting opportunity to own a buildable waterfront lot in the desirable Venice Park section of Atlantic City. This 50 x 105 ft lot offers the perfect canvas for your dream home, vacation getaway, or investment property. Enjoy stunning water views and direct access to the beauty and serenity of life by the bay. The sale includes ...

PROPERTY FEATURES

CONTACT



Ask for Joanne Kelly
Berger Realty Inc
1330 Bay Avenue, Ocean City
Call: 609-425-2106
Email to: jmk@bergerrealty.com

Scan to see Property page.



Berger Realty

Since 1926



Berger Realty, Inc
1330 Bay Avenue
Ocean City, NJ 08226
609-391-1330/609-391-1300
info@bergerrealty.com



2020 Murray, Atlantic City, NJ, 08401

Price \$100,000.00

PROPERTY DETAILS

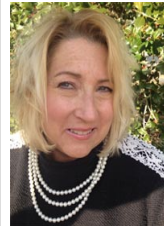
Total Rooms	0
Bedrooms	0
Baths Full	0
Baths Half	0
Year Built	
Type	
Block Number	728
Listing #	595519
Taxes	2468.00

COMMENTS

Welcome to 2020 Murray Avenue – a rare and exciting opportunity to own a buildable waterfront lot in the desirable Venice Park section of Atlantic City. This 50 x 105 ft lot offers the perfect canvas for your dream home, vacation getaway, or investment property. Enjoy stunning water views and direct access to the beauty and serenity of life by the bay. The sale includes ...

PROPERTY FEATURES

CONTACT



Ask for Joanne Kelly
Berger Realty Inc
1330 Bay Avenue, Ocean City
Call: 609-425-2106
Email to: jmk@bergerrealty.com

Scan to see Property page.

