

# Berger Realty

Since 1926



Berger Realty, Inc.  
3160 Asbury Avenue  
Ocean City, NJ 08226  
1-877-237-4371 / 609-399-0076  
info@bergerrealty.com



900-908 Bay, Ocean City, NJ, 08232

Price \$3,999,000.00

## PROPERTY DETAILS

Total Rooms	
Bedrooms	0
Baths Full	0
Baths Half	0
Year Built	
Type	
Block Number	909
Listing #	595286
Taxes	16758.00

## COMMENTS

**TROPHY LOCATION - LOCATION - LOCATION!** This super rare Double-Sized 227x107 HUGE CORNER LOT is located NEAR OPEN BAY in Ocean City NJ's Drive-in Business /Mixed-Use Zone and offers incredible ENDLESS POSSIBILITIES! Enlarge existing commercial expansion ideas and/or pursue various Mixed-Use Redevelopment Opportunities! Currently, there is a landmark operating business sit...

## PROPERTY FEATURES

Exterior Block	OutsideFeatures Loading Dock Security Light/System Storage Building Truck Door	ParkingGarage 11 or More Spaces	InteriorFeatures Display Windows Fire Sprinkler System Handicap Features Restroom Security System Smoke/Fire Alarm Storage
Basement Crawl Space	Heating Gas-Natural	Cooling Central	HotWater Electric
Water Public	Sewer Public Sewer		

## CONTACT



Ask for Evelyn "Evie" Schweibinz  
Berger Realty Inc  
3160 Asbury Avenue, Ocean City  
Call:  
Email to: [ems@bergerrealty.com](mailto:ems@bergerrealty.com)

Scan to see Property page.



# Berger Realty

Since 1926



Berger Realty, Inc.  
3160 Asbury Avenue  
Ocean City, NJ 08226  
1-877-237-4371 / 609-399-0076  
info@bergerrealty.com



900-908 Bay, Ocean City, NJ, 08232

Price \$3,999,000.00

## PROPERTY DETAILS

Total Rooms	
Bedrooms	0
Baths Full	0
Baths Half	0
Year Built	
Type	
Block Number	909
Listing #	595286
Taxes	16758.00

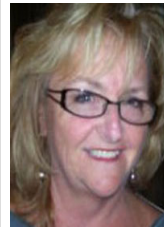
## COMMENTS

**TROPHY LOCATION - LOCATION - LOCATION!** This super rare Double-Sized 227x107 HUGE CORNER LOT is located NEAR OPEN BAY in Ocean City NJ's Drive-in Business /Mixed-Use Zone and offers incredible ENDLESS POSSIBILITIES! Enlarge existing commercial expansion ideas and/or pursue various Mixed-Use Redevelopment Opportunities! Currently, there is a landmark operating business sit...

## PROPERTY FEATURES

Exterior Block	OutsideFeatures Loading Dock Security Light/System Storage Building Truck Door	ParkingGarage 11 or More Spaces	InteriorFeatures Display Windows Fire Sprinkler System Handicap Features Restroom Security System Smoke/Fire Alarm Storage
Basement Crawl Space	Heating Gas-Natural	Cooling Central	HotWater Electric
Water Public	Sewer Public Sewer		

## CONTACT



Ask for Evelyn "Evie" Schweibinz  
Berger Realty Inc  
3160 Asbury Avenue, Ocean City  
Call:  
Email to: [ems@bergerrealty.com](mailto:ems@bergerrealty.com)

Scan to see Property page.

