



Berger Realty, Inc.  
3160 Asbury Avenue  
Ocean City, NJ 08226  
1-877-237-4371 / 609-399-0076  
info@bergerrealty.com



2150 Eighth, Hammonton, NJ, 08037

Price \$24,900.00

PHOTO NOT AVAILABLE

#### PROPERTY DETAILS



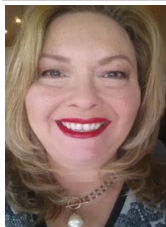
Total Rooms	
Bedrooms	0
Baths Full	0
Baths Half	0
Year Built	
Type	
Block Number	7701
Listing #	595212
Taxes	79.00

#### COMMENTS

4.37 acres. Great for hunting. Lot on paper street. Not buildable at this time , buy for future development. Land sold "as is". Buyer to do their own due diligence with regards to the lot for permits, certifications allowances etc....

#### PROPERTY FEATURES

#### CONTACT



Ask for Theresa Maina  
Berger Realty Inc  
3160 Asbury Avenue, Ocean City  
Call: 609-703-7725  
Email to: tam@bergerrealty.com

Scan to see Property page.



Berger Realty, Inc.  
3160 Asbury Avenue  
Ocean City, NJ 08226  
1-877-237-4371 / 609-399-0076  
info@bergerrealty.com



2150 Eighth, Hammonton, NJ, 08037

Price \$24,900.00

PHOTO NOT AVAILABLE

#### PROPERTY DETAILS



Total Rooms	
Bedrooms	0
Baths Full	0
Baths Half	0
Year Built	
Type	
Block Number	7701
Listing #	595212
Taxes	79.00

#### COMMENTS

4.37 acres. Great for hunting. Lot on paper street. Not buildable at this time , buy for future development. Land sold "as is". Buyer to do their own due diligence with regards to the lot for permits, certifications allowances etc....

#### PROPERTY FEATURES

#### CONTACT



Ask for Theresa Maina  
Berger Realty Inc  
3160 Asbury Avenue, Ocean City  
Call: 609-703-7725  
Email to: tam@bergerrealty.com

Scan to see Property page.

