

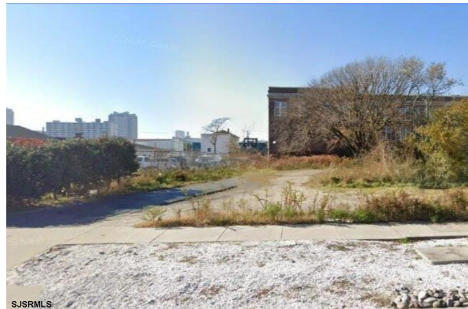


Berger Realty, Inc.  
3160 Asbury Avenue  
Ocean City, NJ 08226  
1-877-237-4371 / 609-399-0076  
info@bergerrealty.com



26 Connecticut, Atlantic City, NJ, 08401

Price \$50,000.00



#### PROPERTY DETAILS

Total Rooms	
Bedrooms	0
Baths Full	0
Baths Half	0
Year Built	
Type	
Block Number	304
Listing #	595208
Taxes	739.00

#### COMMENTS

**VACANT BUILDABLE LAND!!** Nearly 2,700 Square feet! Zoned: RM-1 for Moderate-to-high density, multi-unit residential buildings. This lot is ready for you to come build the multi-family investment property of your dreams! Lot size is approximately 25x107. Please free free to call CRDA for development questions: 609-347-0500....

#### PROPERTY FEATURES

#### CONTACT



Ask for Evelyn "Evie" Schweibinz  
Berger Realty Inc  
3160 Asbury Avenue, Ocean City  
Call:  
Email to: [ems@bergerrealty.com](mailto:ems@bergerrealty.com)

Scan to see Property page.

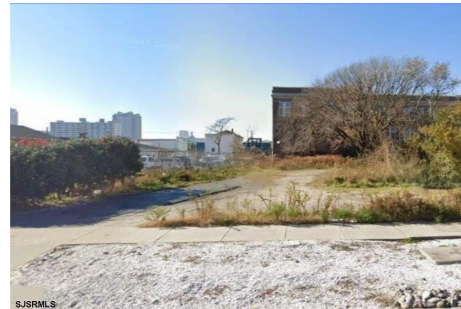


Berger Realty, Inc.  
3160 Asbury Avenue  
Ocean City, NJ 08226  
1-877-237-4371 / 609-399-0076  
info@bergerrealty.com



26 Connecticut, Atlantic City, NJ, 08401

Price \$50,000.00



#### PROPERTY DETAILS

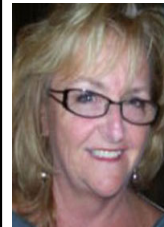
Total Rooms	
Bedrooms	0
Baths Full	0
Baths Half	0
Year Built	
Type	
Block Number	304
Listing #	595208
Taxes	739.00

#### COMMENTS

**VACANT BUILDABLE LAND!!** Nearly 2,700 Square feet! Zoned: RM-1 for Moderate-to-high density, multi-unit residential buildings. This lot is ready for you to come build the multi-family investment property of your dreams! Lot size is approximately 25x107. Please free free to call CRDA for development questions: 609-347-0500....

#### PROPERTY FEATURES

#### CONTACT



Ask for Evelyn "Evie" Schweibinz  
Berger Realty Inc  
3160 Asbury Avenue, Ocean City  
Call:  
Email to: [ems@bergerrealty.com](mailto:ems@bergerrealty.com)

Scan to see Property page.

