

Berger Realty

Since 1928



Berger Realty, Inc
1330 Bay Avenue
Ocean City, NJ 08226
609-391-1330/609-391-1300
info@bergerrealty.com



615 New York, Galloway Township, NJ, 08205

Price \$159,000.00



PROPERTY DETAILS

Total Rooms	7
Bedrooms	5
Baths Full	1
Baths Half	0
Year Built	
Type	Single Family
Block Number	1007.
Listing #	595168
Taxes	4209.00

COMMENTS

Boarding/Group Home Opportunity - colonial-style home featuring 5 bedrooms, and 2 bathrooms. Currently approved as a boarding home and deed restricted, for use as a low- to moderate-income rental. Purchase individually or as part of a bundled package with 611 and 613 S New York Rd. All three properties are located in a designated Redevelopment Zone, with concept plans avai...

PROPERTY FEATURES

Exterior	ParkingGarage	Heating	Water
Vinyl	Two Car	See Remarks	Public

Sewer
Public Sewer

CONTACT



Ask for Joanne Kelly
Berger Realty Inc
1330 Bay Avenue, Ocean City
Call: 609-425-2106
Email to: jmk@bergerrealty.com

Scan to see Property page.



Berger Realty

Since 1928



Berger Realty, Inc
1330 Bay Avenue
Ocean City, NJ 08226
609-391-1330/609-391-1300
info@bergerrealty.com



615 New York, Galloway Township, NJ, 08205

Price \$159,000.00



PROPERTY DETAILS

Total Rooms	7
Bedrooms	5
Baths Full	1
Baths Half	0
Year Built	
Type	Single Family
Block Number	1007.
Listing #	595168
Taxes	4209.00

COMMENTS

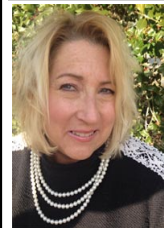
Boarding/Group Home Opportunity - colonial-style home featuring 5 bedrooms, and 2 bathrooms. Currently approved as a boarding home and deed restricted, for use as a low- to moderate-income rental. Purchase individually or as part of a bundled package with 611 and 613 S New York Rd. All three properties are located in a designated Redevelopment Zone, with concept plans avai...

PROPERTY FEATURES

Exterior	ParkingGarage	Heating	Water
Vinyl	Two Car	See Remarks	Public

Sewer
Public Sewer

CONTACT



Ask for Joanne Kelly
Berger Realty Inc
1330 Bay Avenue, Ocean City
Call: 609-425-2106
Email to: jmk@bergerrealty.com

Scan to see Property page.

