

Berger Realty

Since 1926

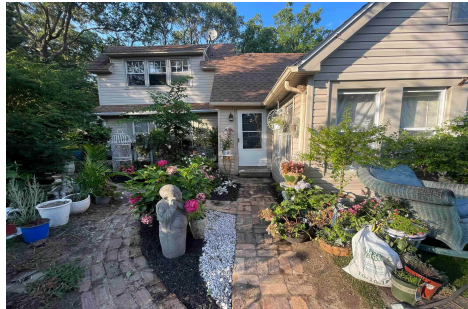


Berger Realty, Inc.
3160 Asbury Avenue
Ocean City, NJ 08226
1-877-237-4371 / 609-399-0076
info@bergerrealty.com



27 Pierson Ave, Somers Point, NJ, 08244

Price \$479,000.00



PROPERTY DETAILS

Total Rooms	
Bedrooms	0
Baths Full	0
Baths Half	0
Year Built	
Type	
Block Number	511
Listing #	594987
Taxes	5872.00

COMMENTS

Investor's Dream or Live-In Opportunity – Duplex at 27 E Pierson Ave! Welcome to this well-maintained duplex located in a desirable neighborhood, offering both solid rental income and future potential. This property features two spacious units: Unit 1: 1 Bedroom, 1 Bathroom. Unit 2: 2 Bedrooms, 1 Bathroom – with flexible layout that can easily be converted into a 3-...

PROPERTY FEATURES

ParkingGarage	Basement	Heating	Cooling
None	Crawl Space	Baseboard	Window Units
Water	Sewer		
Public	Public Sewer		

CONTACT



Ask for Steven Orner
Berger Realty Inc
3160 Asbury Avenue, Ocean City
Call:
Email to: slo@bergerrealty.com

Scan to see Property page.



Berger Realty

Since 1926



Berger Realty, Inc.
3160 Asbury Avenue
Ocean City, NJ 08226
1-877-237-4371 / 609-399-0076
info@bergerrealty.com



27 Pierson Ave, Somers Point, NJ, 08244

Price \$479,000.00



PROPERTY DETAILS

Total Rooms	
Bedrooms	0
Baths Full	0
Baths Half	0
Year Built	
Type	
Block Number	511
Listing #	594987
Taxes	5872.00

COMMENTS

Investor's Dream or Live-In Opportunity – Duplex at 27 E Pierson Ave! Welcome to this well-maintained duplex located in a desirable neighborhood, offering both solid rental income and future potential. This property features two spacious units: Unit 1: 1 Bedroom, 1 Bathroom. Unit 2: 2 Bedrooms, 1 Bathroom – with flexible layout that can easily be converted into a 3-...

PROPERTY FEATURES

ParkingGarage	Basement	Heating	Cooling
None	Crawl Space	Baseboard	Window Units
Water	Sewer		
Public	Public Sewer		

CONTACT



Ask for Steven Orner
Berger Realty Inc
3160 Asbury Avenue, Ocean City
Call:
Email to: slo@bergerrealty.com

Scan to see Property page.

