

Berger Realty

Since 1928



Berger Realty, Inc.
3160 Asbury Avenue
Ocean City, NJ 08226
1-877-237-4371 / 609-399-0076
info@bergerrealty.com



Gravesmith, Egg Harbor Township, NJ, 08234

Price \$109,999.00

PROPERTY DETAILS

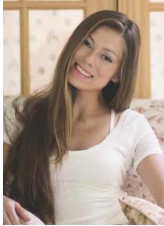
Total Rooms	
Bedrooms	0
Baths Full	0
Baths Half	0
Year Built	
Type	
Block Number	1027, 1028
Listing #	594910
Taxes	1308.00

COMMENTS

Location: Block 1027 (Lots 1-3) & Block 1028 (Lots 1-3) Total Land Area: Approx. 0.229 Acres Total Frontage: 500 sq. ft. Tax Assessment 2024: \$39,000 Annual Taxes: \$1,308 Block 1027 Lots 1-3 Block 1028 Lots 1-3. A rare opportunity to own six combined lots in a desirable location in EHT! Zoned M-1. Offering approximately 2.29 acres with a sprawling 500 sq. ft. of frontage, ...

PROPERTY FEATURES

CONTACT



Ask for Margarita Kobilianets
Berger Realty Inc
3160 Asbury Avenue, Ocean City
Call: 609-674-3417
Email to: mak@bergerrealty.com

Scan to see Property page.



Berger Realty

Since 1928



Berger Realty, Inc.
3160 Asbury Avenue
Ocean City, NJ 08226
1-877-237-4371 / 609-399-0076
info@bergerrealty.com



Gravesmith, Egg Harbor Township, NJ, 08234

Price \$109,999.00

PROPERTY DETAILS

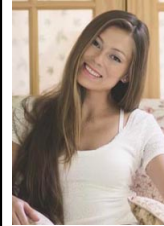
Total Rooms	
Bedrooms	0
Baths Full	0
Baths Half	0
Year Built	
Type	
Block Number	1027, 1028
Listing #	594910
Taxes	1308.00

COMMENTS

Location: Block 1027 (Lots 1-3) & Block 1028 (Lots 1-3) Total Land Area: Approx. 0.229 Acres Total Frontage: 500 sq. ft. Tax Assessment 2024: \$39,000 Annual Taxes: \$1,308 Block 1027 Lots 1-3 Block 1028 Lots 1-3. A rare opportunity to own six combined lots in a desirable location in EHT! Zoned M-1. Offering approximately 2.29 acres with a sprawling 500 sq. ft. of frontage, ...

PROPERTY FEATURES

CONTACT



Ask for Margarita Kobilianets
Berger Realty Inc
3160 Asbury Avenue, Ocean City
Call: 609-674-3417
Email to: mak@bergerrealty.com

Scan to see Property page.

