

Berger Realty

Since 1926



Berger Realty, Inc.
3160 Asbury Avenue
Ocean City, NJ 08226
1-877-237-4371 / 609-399-0076
info@bergerrealty.com



1611 Shore Rd, Northfield, NJ, 08225

Price \$599,000.00

PROPERTY DETAILS

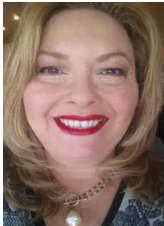
Total Rooms	
Bedrooms	0
Baths Full	0
Baths Half	0
Year Built	
Type	
Block Number	102
Listing #	594660
Taxes	3714.00

COMMENTS

Discover an exceptional real estate opportunity in the heart of Northfield, NJ! Located on Shore Road, this newly subdivided property offers four spacious lots, perfect for building custom dream homes in a highly desirable location. Alternatively, developers have the potential to construct eight luxury townhomes, making this a lucrative investment in a thriving market....

PROPERTY FEATURES

CONTACT



Ask for Theresa Maina
Berger Realty Inc
3160 Asbury Avenue, Ocean City
Call: 609-703-7725
Email to: tam@bergerrealty.com

Scan to see Property page.



Berger Realty

Since 1926



Berger Realty, Inc.
3160 Asbury Avenue
Ocean City, NJ 08226
1-877-237-4371 / 609-399-0076
info@bergerrealty.com



1611 Shore Rd, Northfield, NJ, 08225

Price \$599,000.00

PROPERTY DETAILS

Total Rooms	
Bedrooms	0
Baths Full	0
Baths Half	0
Year Built	
Type	
Block Number	102
Listing #	594660
Taxes	3714.00

COMMENTS

Discover an exceptional real estate opportunity in the heart of Northfield, NJ! Located on Shore Road, this newly subdivided property offers four spacious lots, perfect for building custom dream homes in a highly desirable location. Alternatively, developers have the potential to construct eight luxury townhomes, making this a lucrative investment in a thriving market....

PROPERTY FEATURES

CONTACT



Ask for Theresa Maina
Berger Realty Inc
3160 Asbury Avenue, Ocean City
Call: 609-703-7725
Email to: tam@bergerrealty.com

Scan to see Property page.

