

# Berger Realty

Since 1928



Ocean 17  
1670 Boardwalk  
Ocean City, NJ 08226  
609-391-0500

[oc17@BergerRealty.com](mailto:oc17@BergerRealty.com)



# Berger Realty

Since 1928



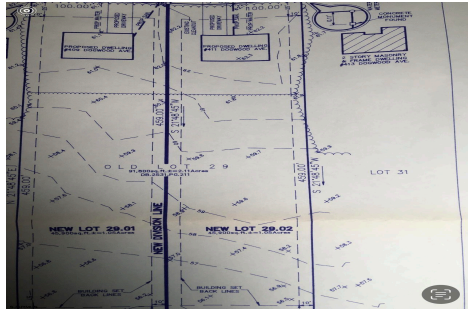
Ocean 17  
1670 Boardwalk  
Ocean City, NJ 08226  
609-391-0500

[oc17@BergerRealty.com](mailto:oc17@BergerRealty.com)



411 DOGWOOD, Egg Harbor Township, NJ, 08234

Price \$150,000.00



### PROPERTY DETAILS

Total Rooms	
Bedrooms	0
Baths Full	0
Baths Half	0
Year Built	
Type	
Block Number	3201
Listing #	594480
Taxes	1670.00

### COMMENTS

*Build your new home on a Dogwood ave in Egg Harbor Township. One vacant lot left; in a size of 1,04 acres; with dimensions 94 x 482. All utilities on the street, zoned residential, buildable lot for a single family home Top location for a family oriented neighborhood. Located with walking distance to the enormous and beautiful Tony Canale Park, walking distance to the 7 m...*

### PROPERTY FEATURES

### CONTACT



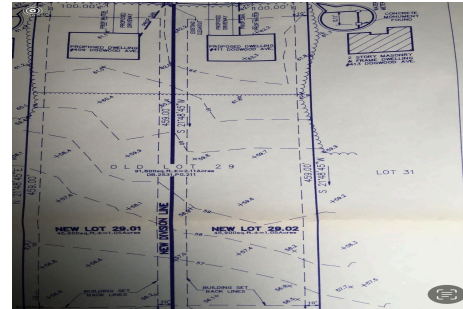
Ask for Colin Halliday  
Berger Realty Inc  
1670 Boardwalk, Ocean City  
Call: 609-335-6702  
Email to: [ceh@bergerrealty.com](mailto:ceh@bergerrealty.com)

Scan to see Property page.



411 DOGWOOD, Egg Harbor Township, NJ, 08234

Price \$150,000.00



### PROPERTY DETAILS

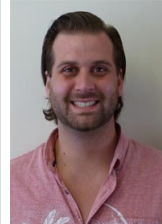
Total Rooms	
Bedrooms	0
Baths Full	0
Baths Half	0
Year Built	
Type	
Block Number	3201
Listing #	594480
Taxes	1670.00

### COMMENTS

*Build your new home on a Dogwood ave in Egg Harbor Township. One vacant lot left; in a size of 1,04 acres; with dimensions 94 x 482. All utilities on the street, zoned residential, buildable lot for a single family home Top location for a family oriented neighborhood. Located with walking distance to the enormous and beautiful Tony Canale Park, walking distance to the 7 m...*

### PROPERTY FEATURES

### CONTACT



Ask for Colin Halliday  
Berger Realty Inc  
1670 Boardwalk, Ocean City  
Call: 609-335-6702  
Email to: [ceh@bergerrealty.com](mailto:ceh@bergerrealty.com)

Scan to see Property page.

