

Berger Realty

Since 1926



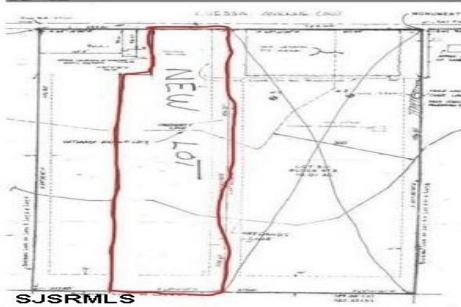
Berger Realty, Inc.
3160 Asbury Avenue
Ocean City, NJ 08226
1-877-237-4371 / 609-399-0076
info@bergerrealty.com



260 Odessa, Egg Harbor City, NJ, 08215

Price \$70,000.00

PROPERTY DETAILS



Total Rooms	
Bedrooms	0
Baths Full	0
Baths Half	0
Year Built	
Type	
Block Number	473
Listing #	594477
Taxes	5559.00

COMMENTS

Unlock the potential of this 5-acre parcel and bring your own vision to life. Develop your dream home , this is your opportunity to add your own touch. Subdivision required before building. Don't miss out on this blank canvas! Buyer responsible for All Approvals as well as any and all certifications and building requirements required by the township....

PROPERTY FEATURES

CONTACT



Ask for Patricia Moss
Berger Realty Inc
3160 Asbury Avenue, Ocean City
Call: 609-335-4616
Email to: tcm@bergerrealty.com

Scan to see Property page.



Berger Realty

Since 1926



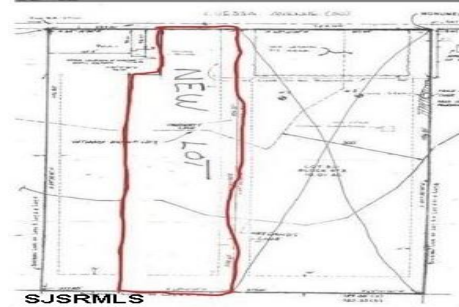
Berger Realty, Inc.
3160 Asbury Avenue
Ocean City, NJ 08226
1-877-237-4371 / 609-399-0076
info@bergerrealty.com



260 Odessa, Egg Harbor City, NJ, 08215

Price \$70,000.00

PROPERTY DETAILS



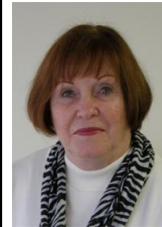
Total Rooms	
Bedrooms	0
Baths Full	0
Baths Half	0
Year Built	
Type	
Block Number	473
Listing #	594477
Taxes	5559.00

COMMENTS

Unlock the potential of this 5-acre parcel and bring your own vision to life. Develop your dream home , this is your opportunity to add your own touch. Subdivision required before building. Don't miss out on this blank canvas! Buyer responsible for All Approvals as well as any and all certifications and building requirements required by the township....

PROPERTY FEATURES

CONTACT



Ask for Patricia Moss
Berger Realty Inc
3160 Asbury Avenue, Ocean City
Call: 609-335-4616
Email to: tcm@bergerrealty.com

Scan to see Property page.

