

# Berger Realty

Since 1928



Berger Realty, Inc.  
3160 Asbury Avenue  
Ocean City, NJ 08226  
1-877-237-4371 / 609-399-0076  
info@bergerrealty.com



105 Thompson, Egg Harbor Township, NJ, 08234

Price \$1,149,900.00

### PROPERTY DETAILS

Total Rooms	13
Bedrooms	3
Baths Full	3
Baths Half	1
Year Built	
Type	Single Family
Block Number	8301
Listing #	594413
Taxes	10766.00



### COMMENTS

**WOW! Don't miss this rare opportunity located on a picturesque 14+/- acres. Lovingly RESTORED SUNDAY DRIVE FARM, a working Lavender Bee & Flower Farm! This 2,300 sq. ft farmhouse has a New septic, New gas heat & central air, New bathroom, New water treatment system, New water heater, 3 large bedrooms, 2.5 baths, spacious living room with wood burning fireplace, beautiful...**

### PROPERTY FEATURES

OutsideFeatures Patio Paved Road Porch Shed Farm	ParkingGarage Detached Garage	OtherRooms Dining Room Eat In Kitchen Laundry/Utility Room Loft Pantry Workshop	InteriorFeatures Carbon Monoxide Detector Greenhouse Handicap Features Kitchen Center Island Storage Smoke/Fire Alarm Walk In Closet
AppliancesIncluded Disposal Dishwasher Dryer Electric Stove Microwave Refrigerator Self Cleaning Oven Washer	AlsoIncluded Partially Furnished	Basement Partial	Heating Gas-Natural
Cooling Central	HotWater Electric	Water Private Well	Sewer Private

### CONTACT

Ask for Margarita Kobilianets  
Berger Realty Inc  
3160 Asbury Avenue, Ocean City  
Call: 609-674-3417

Scan to see Property page.

# Berger Realty

Since 1928



Berger Realty, Inc.  
3160 Asbury Avenue  
Ocean City, NJ 08226  
1-877-237-4371 / 609-399-0076  
info@bergerrealty.com



105 Thompson, Egg Harbor Township, NJ, 08234

Price \$1,149,900.00

### PROPERTY DETAILS

Total Rooms	13
Bedrooms	3
Baths Full	3
Baths Half	1
Year Built	
Type	Single Family
Block Number	8301
Listing #	594413
Taxes	10766.00



### COMMENTS

**WOW! Don't miss this rare opportunity located on a picturesque 14+/- acres. Lovingly RESTORED SUNDAY DRIVE FARM, a working Lavender Bee & Flower Farm! This 2,300 sq. ft farmhouse has a New septic, New gas heat & central air, New bathroom, New water treatment system, New water heater, 3 large bedrooms, 2.5 baths, spacious living room with wood burning fireplace, beautiful...**

### PROPERTY FEATURES

OutsideFeatures Patio Paved Road Porch Shed Farm	ParkingGarage Detached Garage	OtherRooms Dining Room Eat In Kitchen Laundry/Utility Room Loft Pantry Workshop	InteriorFeatures Carbon Monoxide Detector Greenhouse Handicap Features Kitchen Center Island Storage Smoke/Fire Alarm Walk In Closet
AppliancesIncluded Disposal Dishwasher Dryer Electric Stove Microwave Refrigerator Self Cleaning Oven Washer	AlsoIncluded Partially Furnished	Basement Partial	Heating Gas-Natural
Cooling Central	HotWater Electric	Water Private Well	Sewer Private

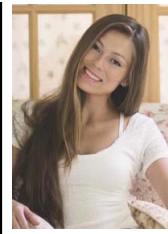
### CONTACT

Ask for Margarita Kobilianets  
Berger Realty Inc  
3160 Asbury Avenue, Ocean City  
Call: 609-674-3417

Scan to see Property page.



Email to: [mak@bergerrealty.com](mailto:mak@bergerrealty.com)



Email to: [mak@bergerrealty.com](mailto:mak@bergerrealty.com)

