

Berger Realty

Since 1928



Ocean 17
1670 Boardwalk
Ocean City, NJ 08226
609-391-0500

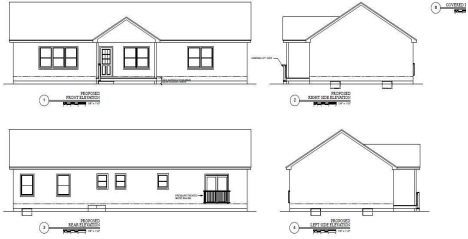
oc17@BergerRealty.com



6422 Strand Ave, Mays Landing, NJ, 08330

Price \$475,000.00

PROPERTY DETAILS



Total Rooms	7
Bedrooms	3
Baths Full	2
Baths Half	0
Year Built	
Type	Single Family
Block Number	538
Listing #	594401
Taxes	769.00



COMMENTS

CHOOSE YOUR FLOOR PLAN AND YOUR COLORS with this New Construction on a Private 2-Acre Wooded Lot. Located just 5 miles from the town centers of Mays Landing and Buena, this 1,700 sq ft home offers both tranquility and convenience. Home Features: 4 Bedrooms, 2 Baths Open-concept living area with a split-bedroom design 6' x 20' covered front porch with a saddle roof styl...

PROPERTY FEATURES

ParkingGarage	Heating	Water	Sewer
None	Gas-Natural	Well	Septic

CONTACT



Ask for Troy Eggie
Berger Realty Inc
1670 Boardwalk, Ocean City
Call: 609-425-0992
Email to: tde@bergerrealty.com

Scan to see Property page.



Berger Realty

Since 1928



Ocean 17
1670 Boardwalk
Ocean City, NJ 08226
609-391-0500

oc17@BergerRealty.com



6422 Strand Ave, Mays Landing, NJ, 08330

Price \$475,000.00

PROPERTY DETAILS



Total Rooms	7
Bedrooms	3
Baths Full	2
Baths Half	0
Year Built	
Type	Single Family
Block Number	538
Listing #	594401
Taxes	769.00



COMMENTS

CHOOSE YOUR FLOOR PLAN AND YOUR COLORS with this New Construction on a Private 2-Acre Wooded Lot. Located just 5 miles from the town centers of Mays Landing and Buena, this 1,700 sq ft home offers both tranquility and convenience. Home Features: 4 Bedrooms, 2 Baths Open-concept living area with a split-bedroom design 6' x 20' covered front porch with a saddle roof styl...

PROPERTY FEATURES

ParkingGarage	Heating	Water	Sewer
None	Gas-Natural	Well	Septic

CONTACT



Ask for Troy Eggie
Berger Realty Inc
1670 Boardwalk, Ocean City
Call: 609-425-0992
Email to: tde@bergerrealty.com

Scan to see Property page.

