



Berger Realty, Inc.  
3160 Asbury Avenue  
Ocean City, NJ 08226  
1-877-237-4371 / 609-399-0076  
info@bergerrealty.com



6422 Strand Ave, Mays Landing, NJ, 08330

Price \$475,000.00

#### PROPERTY DETAILS



Total Rooms	7
Bedrooms	3
Baths Full	2
Baths Half	0
Year Built	
Type	Single Family
Block Number	538
Listing #	594401
Taxes	769.00

#### COMMENTS

**CHOOSE YOUR FLOOR PLAN AND YOUR COLORS with this New Construction on a Private 2-Acre Wooded Lot. Located just 5 miles from the town centers of Mays Landing and Buena, this 1,700 sq ft home offers both tranquility and convenience. Home Features: 4 Bedrooms, 2 Baths Open-concept living area with a split-bedroom design 6' x 20' covered front porch with a saddle roof styl...**

#### PROPERTY FEATURES

ParkingGarage	Heating	Water	Sewer
None	Gas-Natural	Well	Septic

#### CONTACT



Ask for Nicole Williams  
Berger Realty Inc  
3160 Asbury Avenue, Ocean City  
Call: 856-357-6463  
Email to: ncw@bergerrealty.com

Scan to see Property page.



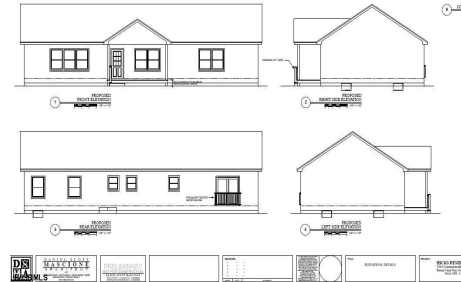
Berger Realty, Inc.  
3160 Asbury Avenue  
Ocean City, NJ 08226  
1-877-237-4371 / 609-399-0076  
info@bergerrealty.com



6422 Strand Ave, Mays Landing, NJ, 08330

Price \$475,000.00

#### PROPERTY DETAILS



Total Rooms	7
Bedrooms	3
Baths Full	2
Baths Half	0
Year Built	
Type	Single Family
Block Number	538
Listing #	594401
Taxes	769.00

#### COMMENTS

**CHOOSE YOUR FLOOR PLAN AND YOUR COLORS with this New Construction on a Private 2-Acre Wooded Lot. Located just 5 miles from the town centers of Mays Landing and Buena, this 1,700 sq ft home offers both tranquility and convenience. Home Features: 4 Bedrooms, 2 Baths Open-concept living area with a split-bedroom design 6' x 20' covered front porch with a saddle roof styl...**

#### PROPERTY FEATURES

ParkingGarage	Heating	Water	Sewer
None	Gas-Natural	Well	Septic

#### CONTACT



Ask for Nicole Williams  
Berger Realty Inc  
3160 Asbury Avenue, Ocean City  
Call: 856-357-6463  
Email to: ncw@bergerrealty.com

Scan to see Property page.

