

Berger Realty

Since 1928



Berger Realty, Inc.
3160 Asbury Avenue
Ocean City, NJ 08226
1-877-237-4371 / 609-399-0076
info@bergerrealty.com



4877 Bala, Mays Landing, NJ, 08330

Price \$250,000.00

PROPERTY DETAILS

Total Rooms	9
Bedrooms	4
Baths Full	3
Baths Half	1
Year Built	
Type	Single Family
Block Number	1028.02
Listing #	594355
Taxes	3143.00



COMMENTS

Great tenant lease until mid August tenant paying 1850.00 a month...

PROPERTY FEATURES

Exterior	ParkingGarage	Heating	Water
Brick	None	Gas-Natural	Public
Sewer			
Public Sewer			

CONTACT



Ask for Margarita Kobilianets
Berger Realty Inc
3160 Asbury Avenue, Ocean City
Call: 609-674-3417
Email to: mak@bergerrealty.com

Scan to see Property page.



Berger Realty

Since 1928



Berger Realty, Inc.
3160 Asbury Avenue
Ocean City, NJ 08226
1-877-237-4371 / 609-399-0076
info@bergerrealty.com



4877 Bala, Mays Landing, NJ, 08330

Price \$250,000.00

PROPERTY DETAILS

Total Rooms	9
Bedrooms	4
Baths Full	3
Baths Half	1
Year Built	
Type	Single Family
Block Number	1028.02
Listing #	594355
Taxes	3143.00



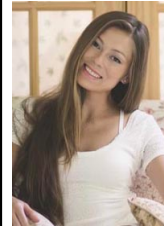
COMMENTS

Great tenant lease until mid August tenant paying 1850.00 a month...

PROPERTY FEATURES

Exterior	ParkingGarage	Heating	Water
Brick	None	Gas-Natural	Public
Sewer			
Public Sewer			

CONTACT



Ask for Margarita Kobilianets
Berger Realty Inc
3160 Asbury Avenue, Ocean City
Call: 609-674-3417
Email to: mak@bergerrealty.com

Scan to see Property page.

