

# Berger Realty

Since 1928



Berger Realty, Inc.  
3160 Asbury Avenue  
Ocean City, NJ 08226  
1-877-237-4371 / 609-399-0076  
info@bergerrealty.com

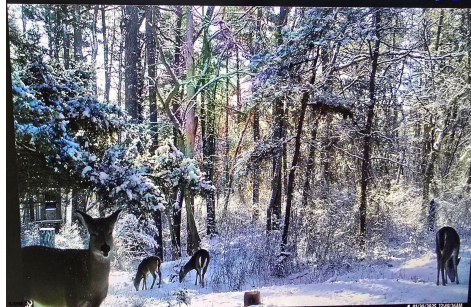


10th, Folsom Borough, NJ, 08037

Price \$70,000.00

### PROPERTY DETAILS

Total Rooms	
Bedrooms	0
Baths Full	0
Baths Half	0
Year Built	
Type	
Block Number	3202
Listing #	594181
Taxes	614.00



### COMMENTS

Discover your own slice of paradise with this stunning approximately 29-acre wooded lot, perfect for outdoor enthusiasts and nature lovers alike! Nestled in a serene location, this property is ideally suited for deer hunting, recreational activities, or simply enjoying the beauty of the great outdoors. Expansive Wooded Area: The property boasts an abundance of lush cedar ...

### PROPERTY FEATURES

### CONTACT



Ask for Patricia Moss  
Berger Realty Inc  
3160 Asbury Avenue, Ocean City  
Call: 609-335-4616  
Email to: tcm@bergerrealty.com

Scan to see Property page.



# Berger Realty

Since 1928



Berger Realty, Inc.  
3160 Asbury Avenue  
Ocean City, NJ 08226  
1-877-237-4371 / 609-399-0076  
info@bergerrealty.com

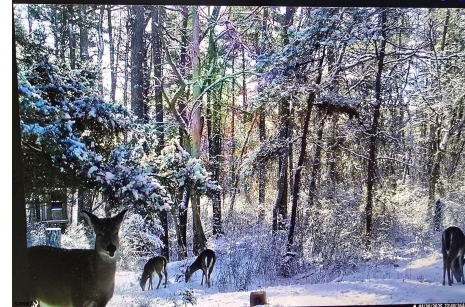


10th, Folsom Borough, NJ, 08037

Price \$70,000.00

### PROPERTY DETAILS

Total Rooms	
Bedrooms	0
Baths Full	0
Baths Half	0
Year Built	
Type	
Block Number	3202
Listing #	594181
Taxes	614.00



### COMMENTS

Discover your own slice of paradise with this stunning approximately 29-acre wooded lot, perfect for outdoor enthusiasts and nature lovers alike! Nestled in a serene location, this property is ideally suited for deer hunting, recreational activities, or simply enjoying the beauty of the great outdoors. Expansive Wooded Area: The property boasts an abundance of lush cedar ...

### PROPERTY FEATURES

### CONTACT



Ask for Patricia Moss  
Berger Realty Inc  
3160 Asbury Avenue, Ocean City  
Call: 609-335-4616  
Email to: tcm@bergerrealty.com

Scan to see Property page.

