

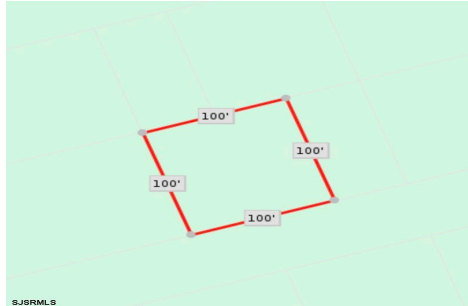


Berger Realty, Inc.  
3160 Asbury Avenue  
Ocean City, NJ 08226  
1-877-237-4371 / 609-399-0076  
info@bergerrealty.com



Somers Point Rd. / Connell Ave, Egg Harbor Township, NJ,  
08234

Price \$15,000.00



#### PROPERTY DETAILS

Total Rooms	0
Bedrooms	0
Baths Full	0
Baths Half	0
Year Built	
Type	
Block Number	8004
Listing #	594090
Taxes	83.00

#### COMMENTS

10,000 Square Foot Lot Per Egg Harbor Township zoning. Appropriate for neighboring properties to add square footage to their adjoining property. The Buyer has to perform all due diligence....

#### PROPERTY FEATURES

#### CONTACT



Ask for Evelyn "Evie" Schweibinz  
Berger Realty Inc  
3160 Asbury Avenue, Ocean City  
Call:  
Email to: [ems@bergerrealty.com](mailto:ems@bergerrealty.com)

Scan to see Property page.



Berger Realty, Inc.  
3160 Asbury Avenue  
Ocean City, NJ 08226  
1-877-237-4371 / 609-399-0076  
info@bergerrealty.com



Somers Point Rd. / Connell Ave, Egg Harbor Township, NJ,  
08234

Price \$15,000.00



#### PROPERTY DETAILS

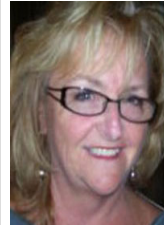
Total Rooms	0
Bedrooms	0
Baths Full	0
Baths Half	0
Year Built	
Type	
Block Number	8004
Listing #	594090
Taxes	83.00

#### COMMENTS

10,000 Square Foot Lot Per Egg Harbor Township zoning. Appropriate for neighboring properties to add square footage to their adjoining property. The Buyer has to perform all due diligence....

#### PROPERTY FEATURES

#### CONTACT



Ask for Evelyn "Evie" Schweibinz  
Berger Realty Inc  
3160 Asbury Avenue, Ocean City  
Call:  
Email to: [ems@bergerrealty.com](mailto:ems@bergerrealty.com)

Scan to see Property page.

