

Berger Realty

Since 1926

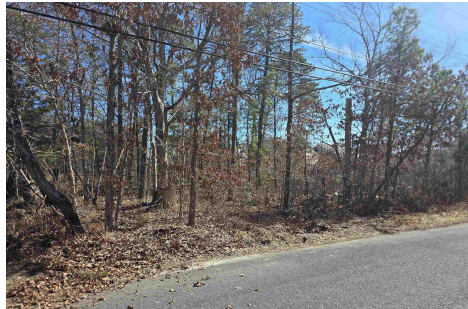


Berger Realty, Inc.
3160 Asbury Avenue
Ocean City, NJ 08226
1-877-237-4371 / 609-399-0076
info@bergerrealty.com



206 Carver Ave, Egg Harbor Township, NJ, 08234

Price \$85,000.00



PROPERTY DETAILS

Total Rooms	
Bedrooms	0
Baths Full	0
Baths Half	0
Year Built	
Type	
Block Number	2715
Listing #	594041
Taxes	1456.00

COMMENTS

This is great location to build a house with lot 100 x 100. This property is close to schools, shopping centers, dining area, Hospital, Supermarket and EHT recreational facilities. This property location offers easy access to major highways and nearby cities. The Buyer has to perform all due diligence....

PROPERTY FEATURES

CONTACT



Ask for Margarita Kobilianets
Berger Realty Inc
3160 Asbury Avenue, Ocean City
Call: 609-674-3417
Email to: mak@bergerrealty.com

Scan to see Property page.



Berger Realty

Since 1926



Berger Realty, Inc.
3160 Asbury Avenue
Ocean City, NJ 08226
1-877-237-4371 / 609-399-0076
info@bergerrealty.com



206 Carver Ave, Egg Harbor Township, NJ, 08234

Price \$85,000.00



PROPERTY DETAILS

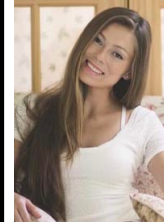
Total Rooms	
Bedrooms	0
Baths Full	0
Baths Half	0
Year Built	
Type	
Block Number	2715
Listing #	594041
Taxes	1456.00

COMMENTS

This is great location to build a house with lot 100 x 100. This property is close to schools, shopping centers, dining area, Hospital, Supermarket and EHT recreational facilities. This property location offers easy access to major highways and nearby cities. The Buyer has to perform all due diligence....

PROPERTY FEATURES

CONTACT



Ask for Margarita Kobilianets
Berger Realty Inc
3160 Asbury Avenue, Ocean City
Call: 609-674-3417
Email to: mak@bergerrealty.com

Scan to see Property page.

