

Berger Realty

Since 1926



Berger Realty, Inc.
3160 Asbury Avenue
Ocean City, NJ 08226
1-877-237-4371 / 609-399-0076
info@bergerrealty.com

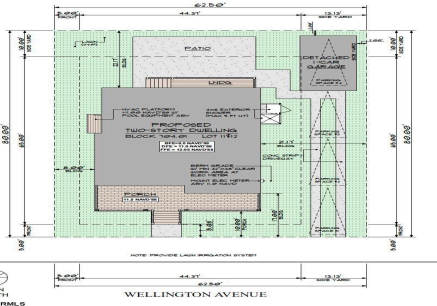


7605 Wellington, Margate, NJ, 08402

Price \$995,000.00

PROPERTY DETAILS

Total Rooms	
Bedrooms	0
Baths Full	0
Baths Half	0
Year Built	
Type	
Block Number	704.0
Listing #	593675
Taxes	270.00



COMMENTS

BUILDABLE OVERSIZED LOT IN MARGATE 5,000 sqft 62.5' frontage x 80' deep- Plenty of room for a POOL. Located in quiet no through street off N Clermont Avenue with plenty of on street parking for guests. No side neighbor lot is situated next to natural reserve & walking trails to the bay Price includes zoning approved plans by Lolio Architect, plans include 5 beds-4&1/2 ba...

PROPERTY FEATURES

CONTACT



Ask for Marianne Johnsen
Berger Realty Inc
3160 Asbury Avenue, Ocean City
Call: 609-425-0622
Email to: maj@bergerrealty.com

Scan to see Property page.



Berger Realty

Since 1926



Berger Realty, Inc.
3160 Asbury Avenue
Ocean City, NJ 08226
1-877-237-4371 / 609-399-0076
info@bergerrealty.com

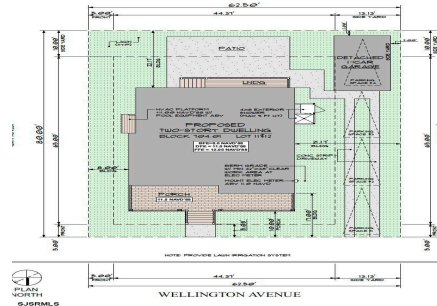


7605 Wellington, Margate, NJ, 08402

Price \$995,000.00

PROPERTY DETAILS

Total Rooms	
Bedrooms	0
Baths Full	0
Baths Half	0
Year Built	
Type	
Block Number	704.0
Listing #	593675
Taxes	270.00



COMMENTS

BUILDABLE OVERSIZED LOT IN MARGATE 5,000 sqft 62.5' frontage x 80' deep- Plenty of room for a POOL. Located in quiet no through street off N Clermont Avenue with plenty of on street parking for guests. No side neighbor lot is situated next to natural reserve & walking trails to the bay Price includes zoning approved plans by Lolio Architect, plans include 5 beds-4&1/2 ba...

PROPERTY FEATURES

CONTACT



Ask for Marianne Johnsen
Berger Realty Inc
3160 Asbury Avenue, Ocean City
Call: 609-425-0622
Email to: maj@bergerrealty.com

Scan to see Property page.

