

# Berger Realty

Since 1926



Berger Realty, Inc.  
3160 Asbury Avenue  
Ocean City, NJ 08226  
1-877-237-4371 / 609-399-0076  
info@bergerrealty.com

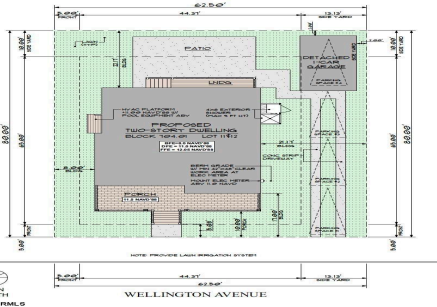


7605 Wellington, Margate, NJ, 08402

Price \$995,000.00

### PROPERTY DETAILS

Total Rooms	
Bedrooms	0
Baths Full	0
Baths Half	0
Year Built	
Type	
Block Number	704.0
Listing #	593675
Taxes	270.00



### COMMENTS

**BUILDABLE OVERSIZED LOT IN MARGATE 5,000 sqft 62.5' frontage x 80' deep- Plenty of room for a POOL. Located in quiet no through street off N Clermont Avenue with plenty of on street parking for guests. No side neighbor lot is situated next to natural reserve & walking trails to the bay Price includes zoning approved plans by Lolio Architect, plans include 5 beds-4&1/2 ba...**

### PROPERTY FEATURES

### CONTACT



Ask for James Gray Haenn  
Berger Realty Inc  
3160 Asbury Avenue, Ocean City  
Call: 215-421-7609  
Email to: [jgh@bergerrealty.com](mailto:jgh@bergerrealty.com)

Scan to see Property page.



# Berger Realty

Since 1926



Berger Realty, Inc.  
3160 Asbury Avenue  
Ocean City, NJ 08226  
1-877-237-4371 / 609-399-0076  
info@bergerrealty.com

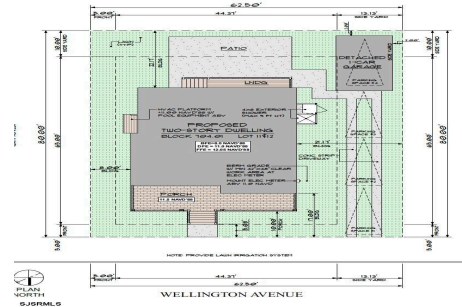


7605 Wellington, Margate, NJ, 08402

Price \$995,000.00

### PROPERTY DETAILS

Total Rooms	
Bedrooms	0
Baths Full	0
Baths Half	0
Year Built	
Type	
Block Number	704.0
Listing #	593675
Taxes	270.00



### COMMENTS

**BUILDABLE OVERSIZED LOT IN MARGATE 5,000 sqft 62.5' frontage x 80' deep- Plenty of room for a POOL. Located in quiet no through street off N Clermont Avenue with plenty of on street parking for guests. No side neighbor lot is situated next to natural reserve & walking trails to the bay Price includes zoning approved plans by Lolio Architect, plans include 5 beds-4&1/2 ba...**

### PROPERTY FEATURES

### CONTACT



Ask for James Gray Haenn  
Berger Realty Inc  
3160 Asbury Avenue, Ocean City  
Call: 215-421-7609  
Email to: [jgh@bergerrealty.com](mailto:jgh@bergerrealty.com)

Scan to see Property page.

