

Berger Realty

Since 1926



Berger Realty, Inc
1330 Bay Avenue
Ocean City, NJ 08226
609-391-1330/609-391-1300
info@bergerrealty.com

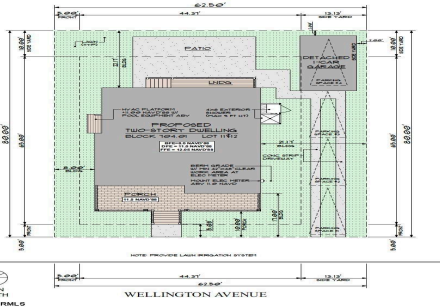


7605 Wellington, Margate, NJ, 08402

Price \$995,000.00

PROPERTY DETAILS

Total Rooms	
Bedrooms	0
Baths Full	0
Baths Half	0
Year Built	
Type	
Block Number	704.0
Listing #	593675
Taxes	270.00



COMMENTS

BUILDABLE OVERSIZED LOT IN MARGATE 5,000 sqft 62.5' frontage x 80' deep- Plenty of room for a POOL. Located in quiet no through street off N Clermont Avenue with plenty of on street parking for guests. No side neighbor lot is situated next to natural reserve & walking trails to the bay Price includes zoning approved plans by Lolio Architect, plans include 5 beds-4&1/2 ba...

PROPERTY FEATURES

CONTACT



Ask for Barbara Fasy
Berger Realty Inc
1330 Bay Avenue, Ocean City
Call: 609-602-4492
Email to: bf@bergerrealty.com

Scan to see Property page.



Berger Realty

Since 1926



Berger Realty, Inc
1330 Bay Avenue
Ocean City, NJ 08226
609-391-1330/609-391-1300
info@bergerrealty.com

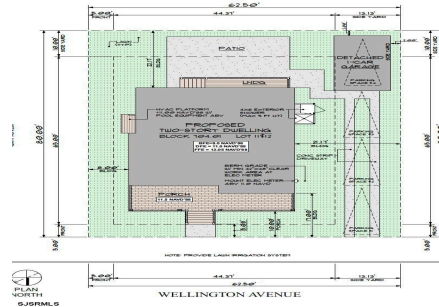


7605 Wellington, Margate, NJ, 08402

Price \$995,000.00

PROPERTY DETAILS

Total Rooms	
Bedrooms	0
Baths Full	0
Baths Half	0
Year Built	
Type	
Block Number	704.0
Listing #	593675
Taxes	270.00



COMMENTS

BUILDABLE OVERSIZED LOT IN MARGATE 5,000 sqft 62.5' frontage x 80' deep- Plenty of room for a POOL. Located in quiet no through street off N Clermont Avenue with plenty of on street parking for guests. No side neighbor lot is situated next to natural reserve & walking trails to the bay Price includes zoning approved plans by Lolio Architect, plans include 5 beds-4&1/2 ba...

PROPERTY FEATURES

CONTACT



Ask for Barbara Fasy
Berger Realty Inc
1330 Bay Avenue, Ocean City
Call: 609-602-4492
Email to: bf@bergerrealty.com

Scan to see Property page.

