

# Berger Realty

Since 1928



Berger Realty, Inc.  
3160 Asbury Avenue  
Ocean City, NJ 08226  
1-877-237-4371 / 609-399-0076  
info@bergerrealty.com



6418 Reega Ave, Egg Harbor Township, NJ, 08234

Price \$75,000.00

### PROPERTY DETAILS

Total Rooms	
Bedrooms	0
Baths Full	0
Baths Half	0
Year Built	
Type	
Block Number	1807
Listing #	593661
Taxes	1187.00

### COMMENTS

Explore limitless possibilities on this expansive 6.24+/- acre parcel of unimproved land in the heart of Egg Harbor Township, NJ! The seller acknowledges that a portion of the property is located within wetlands, which may impact the development potential and require additional permits and mitigation measures. Buyers' responsibility to complete Pineland/Wetland Approvals ...

### PROPERTY FEATURES

### CONTACT



Ask for Margarita Kobilianets  
Berger Realty Inc  
3160 Asbury Avenue, Ocean City  
Call: 609-674-3417  
Email to: mak@bergerrealty.com

Scan to see Property page.



# Berger Realty

Since 1928



Berger Realty, Inc.  
3160 Asbury Avenue  
Ocean City, NJ 08226  
1-877-237-4371 / 609-399-0076  
info@bergerrealty.com



6418 Reega Ave, Egg Harbor Township, NJ, 08234

Price \$75,000.00

### PROPERTY DETAILS

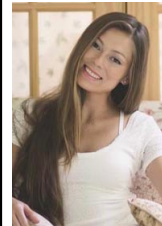
Total Rooms	
Bedrooms	0
Baths Full	0
Baths Half	0
Year Built	
Type	
Block Number	1807
Listing #	593661
Taxes	1187.00

### COMMENTS

Explore limitless possibilities on this expansive 6.24+/- acre parcel of unimproved land in the heart of Egg Harbor Township, NJ! The seller acknowledges that a portion of the property is located within wetlands, which may impact the development potential and require additional permits and mitigation measures. Buyers' responsibility to complete Pineland/Wetland Approvals ...

### PROPERTY FEATURES

### CONTACT



Ask for Margarita Kobilianets  
Berger Realty Inc  
3160 Asbury Avenue, Ocean City  
Call: 609-674-3417  
Email to: mak@bergerrealty.com

Scan to see Property page.

