

Berger Realty

Since 1926

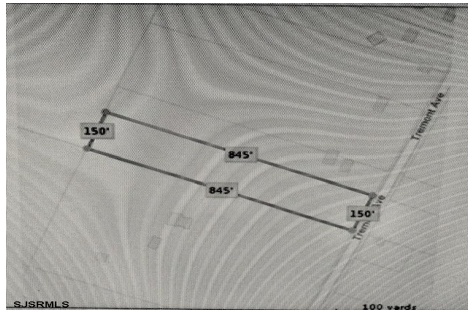


Berger Realty, Inc.
3160 Asbury Avenue
Ocean City, NJ 08226
1-877-237-4371 / 609-399-0076
info@bergerrealty.com



5032 Tremont, Egg Harbor Township, NJ, 08234

Price \$179,000.00



PROPERTY DETAILS

| | |
|--------------|---------|
| Total Rooms | |
| Bedrooms | 0 |
| Baths Full | 0 |
| Baths Half | 0 |
| Year Built | |
| Type | |
| Block Number | 4004 |
| Listing # | 593347 |
| Taxes | 3223.00 |

COMMENTS

New on Market! Buldable Lot with Pinelands Approval. Calling are desired Farm to Table Buyers! Developers, Homeowners come build your multi-family, single-family, and/or desired approval use. Buyers are responsible to perform all inspections, zoning, and due diligence. Call LB for details....

PROPERTY FEATURES

CONTACT



Ask for Tanya Pinkerton
Berger Realty Inc
3160 Asbury Avenue, Ocean City
Call: 609-442-0418
Email to: tp@bergerrealty.com

Scan to see Property page.



Berger Realty

Since 1926

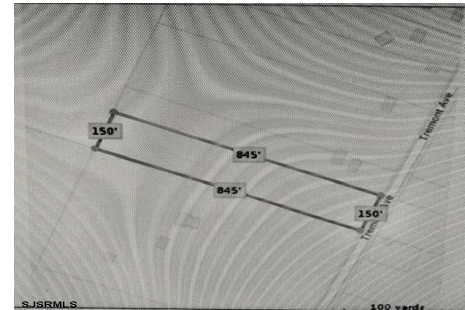


Berger Realty, Inc.
3160 Asbury Avenue
Ocean City, NJ 08226
1-877-237-4371 / 609-399-0076
info@bergerrealty.com



5032 Tremont, Egg Harbor Township, NJ, 08234

Price \$179,000.00



PROPERTY DETAILS

| | |
|--------------|---------|
| Total Rooms | |
| Bedrooms | 0 |
| Baths Full | 0 |
| Baths Half | 0 |
| Year Built | |
| Type | |
| Block Number | 4004 |
| Listing # | 593347 |
| Taxes | 3223.00 |

COMMENTS

New on Market! Buldable Lot with Pinelands Approval. Calling are desired Farm to Table Buyers! Developers, Homeowners come build your multi-family, single-family, and/or desired approval use. Buyers are responsible to perform all inspections, zoning, and due diligence. Call LB for details....

PROPERTY FEATURES

CONTACT



Ask for Tanya Pinkerton
Berger Realty Inc
3160 Asbury Avenue, Ocean City
Call: 609-442-0418
Email to: tp@bergerrealty.com

Scan to see Property page.

