

Berger Realty

Since 1926



Berger Realty, Inc.
3160 Asbury Avenue
Ocean City, NJ 08226
1-877-237-4371 / 609-399-0076
info@bergerrealty.com



927 Main, Pleasantville, NJ, 08232

Price \$310,000.00

PROPERTY DETAILS

Total Rooms	
Bedrooms	0
Baths Full	0
Baths Half	0
Year Built	1993
Type	
Block Number	394
Listing #	593227
Taxes	16179.00

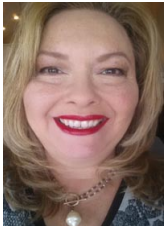


COMMENTS

Welcome to Heritage Square Commercial Park, where opportunity meets potential! This standalone building, conveniently located minutes from the AC expressway and situated near Absecon, is a remarkable canvas awaiting your visionary touch to bring it to completion. Originally was a church, this property has been undergoing a transformation into a medical child's daycare fac...

PROPERTY FEATURES

CONTACT



Ask for Theresa Maina
Berger Realty Inc
3160 Asbury Avenue, Ocean City
Call: 609-703-7725
Email to: tam@bergerrealty.com

Scan to see Property page.



Berger Realty

Since 1926



Berger Realty, Inc.
3160 Asbury Avenue
Ocean City, NJ 08226
1-877-237-4371 / 609-399-0076
info@bergerrealty.com



927 Main, Pleasantville, NJ, 08232

Price \$310,000.00

PROPERTY DETAILS

Total Rooms	
Bedrooms	0
Baths Full	0
Baths Half	0
Year Built	1993
Type	
Block Number	394
Listing #	593227
Taxes	16179.00



COMMENTS

Welcome to Heritage Square Commercial Park, where opportunity meets potential! This standalone building, conveniently located minutes from the AC expressway and situated near Absecon, is a remarkable canvas awaiting your visionary touch to bring it to completion. Originally was a church, this property has been undergoing a transformation into a medical child's daycare fac...

PROPERTY FEATURES

CONTACT



Ask for Theresa Maina
Berger Realty Inc
3160 Asbury Avenue, Ocean City
Call: 609-703-7725
Email to: tam@bergerrealty.com

Scan to see Property page.

