

Berger Realty

Since 1928

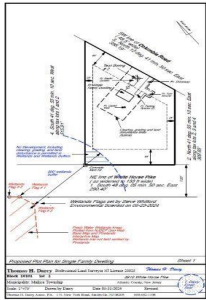


Berger Realty, Inc.
3160 Asbury Avenue
Ocean City, NJ 08226
1-877-237-4371 / 609-399-0076
info@bergerrealty.com



Columbia, Mullica Township, NJ, 08215

Price \$129,900.00



PROPERTY DETAILS

Total Rooms	
Bedrooms	0
Baths Full	0
Baths Half	0
Year Built	
Type	
Block Number	10101
Listing #	593071
Taxes	2101.00

SJSRMLS

COMMENTS

Wooded 2.5+ acre lot, all approvals are in process. Soil boring and plot plan completed. Four-bedroom septic design is in process, which is the last item the Pinelands Commission needs to issue the Certificate of Filing. Currently the lot across the street is getting cleared for a new home. Rare to find lots with approvals being completed by the seller, saving you time and...

PROPERTY FEATURES

CONTACT



Ask for Leon Grisbaum
Berger Realty Inc
3160 Asbury Avenue, Ocean City
Call:
Email to:

Scan to see Property page.



Berger Realty

Since 1928

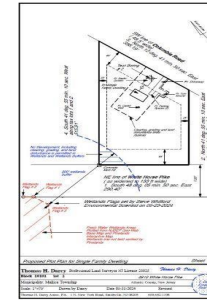


Berger Realty, Inc.
3160 Asbury Avenue
Ocean City, NJ 08226
1-877-237-4371 / 609-399-0076
info@bergerrealty.com



Columbia, Mullica Township, NJ, 08215

Price \$129,900.00



PROPERTY DETAILS

Total Rooms	
Bedrooms	0
Baths Full	0
Baths Half	0
Year Built	
Type	
Block Number	10101
Listing #	593071
Taxes	2101.00

SJSRMLS

COMMENTS

Wooded 2.5+ acre lot, all approvals are in process. Soil boring and plot plan completed. Four-bedroom septic design is in process, which is the last item the Pinelands Commission needs to issue the Certificate of Filing. Currently the lot across the street is getting cleared for a new home. Rare to find lots with approvals being completed by the seller, saving you time and...

PROPERTY FEATURES

CONTACT



Ask for Leon Grisbaum
Berger Realty Inc
3160 Asbury Avenue, Ocean City
Call:
Email to:

Scan to see Property page.

