

Berger Realty

Since 1928



Berger Realty, Inc.
3160 Asbury Avenue
Ocean City, NJ 08226
1-877-237-4371 / 609-399-0076
info@bergerrealty.com



112 6th, Ocean City, NJ, 08226

Price \$2,499,000.00

PROPERTY DETAILS

Total Rooms	
Bedrooms	0
Baths Full	0
Baths Half	0
Year Built	
Type	
Block Number	607
Listing #	592906
Taxes	6822.00

COMMENTS

DEVELOPERS • BUILDERS • INVESTORS - This massive 19,550sf lot presents an opportunity to develop over 1/4 of an entire city block in Ocean City, New Jersey — America's Greatest Family Resort®. Present use is commercial; potential for residential. Buyer due diligence required for subdivision....

PROPERTY FEATURES

CONTACT



Ask for Joyce McMahon
Berger Realty Inc
3160 Asbury Avenue, Ocean City
Call:
Email to: jmm@bergerrealty.com

Scan to see Property page.



Berger Realty

Since 1928



Berger Realty, Inc.
3160 Asbury Avenue
Ocean City, NJ 08226
1-877-237-4371 / 609-399-0076
info@bergerrealty.com



112 6th, Ocean City, NJ, 08226

Price \$2,499,000.00

PROPERTY DETAILS

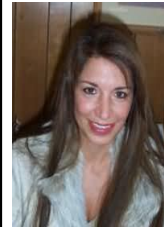
Total Rooms	
Bedrooms	0
Baths Full	0
Baths Half	0
Year Built	
Type	
Block Number	607
Listing #	592906
Taxes	6822.00

COMMENTS

DEVELOPERS • BUILDERS • INVESTORS - This massive 19,550sf lot presents an opportunity to develop over 1/4 of an entire city block in Ocean City, New Jersey — America's Greatest Family Resort®. Present use is commercial; potential for residential. Buyer due diligence required for subdivision....

PROPERTY FEATURES

CONTACT



Ask for Joyce McMahon
Berger Realty Inc
3160 Asbury Avenue, Ocean City
Call:
Email to: jmm@bergerrealty.com

Scan to see Property page.

