

Berger Realty

Since 1926



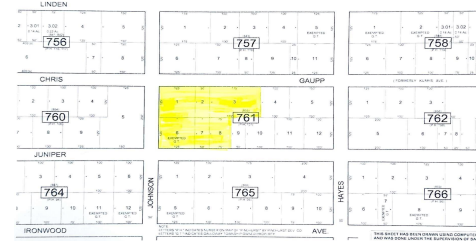
Berger Realty, Inc.
3160 Asbury Avenue
Ocean City, NJ 08226
1-877-237-4371 / 609-399-0076
info@bergerrealty.com



Chris Gaupp, Galloway Township, NJ, 08205

Price \$499,000.00

PROPERTY DETAILS



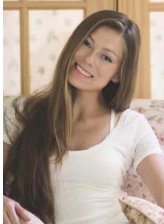
Total Rooms
Bedrooms 0
Baths Full 0
Baths Half 0
Year Built
Type
Block Number 761
Listing # 592596
Taxes

COMMENTS

Lowest price buildable parcel on Chris Gaupp Rd, 350 feet of frontage, 1.7 acres of high and dry land with no wetlands or wetlands buffers, adjacent property was for sale if you need additional property, situated near Stockton College, Atlantic Regional Medical Centre and Bacharach Institute for Rehabilitation, Atlanticare. Excellent access to Rt 30, Garden State Parkway, ...

PROPERTY FEATURES

CONTACT



Ask for Margarita Kobilianets
 Berger Realty Inc
 3160 Asbury Avenue, Ocean City
 Call: 609-674-3417
 Email to: mak@bergerrealty.com

Scan to see Property page.



Berger Realty

Since 1926



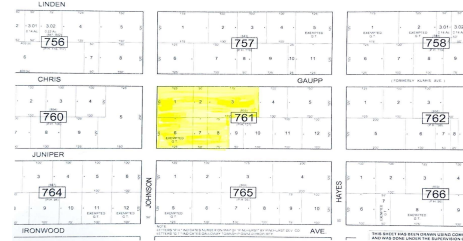
Berger Realty, Inc.
3160 Asbury Avenue
Ocean City, NJ 08226
1-877-237-4371 / 609-399-0076
info@bergerrealty.com



Chris Gaupp, Galloway Township, NJ, 08205

Price \$499,000.00

PROPERTY DETAILS



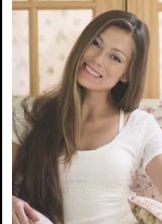
Total Rooms
Bedrooms 0
Baths Full 0
Baths Half 0
Year Built
Type
Block Number 761
Listing # 592596
Taxes

COMMENTS

Lowest price buildable parcel on Chris Gaupp Rd, 350 feet of frontage, 1.7 acres of high and dry land with no wetlands or wetlands buffers, adjacent property was for sale if you need additional property, situated near Stockton College, Atlantic Regional Medical Centre and Bacharach Institute for Rehabilitation, Atlanticare. Excellent access to Rt 30, Garden State Parkway, ...

PROPERTY FEATURES

CONTACT



Ask for Margarita Kobilianets
 Berger Realty Inc
 3160 Asbury Avenue, Ocean City
 Call: 609-674-3417
 Email to: mak@bergerrealty.com

Scan to see Property page.

