

# Berger Realty

Since 1926



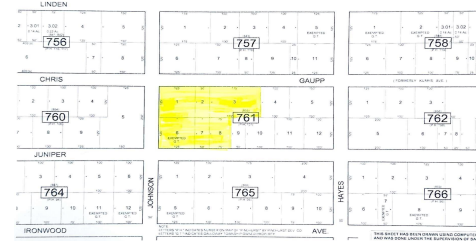
Berger Realty, Inc.  
3160 Asbury Avenue  
Ocean City, NJ 08226  
1-877-237-4371 / 609-399-0076  
info@bergerrealty.com



Chris Gaupp, Galloway Township, NJ, 08205

Price \$499,000.00

### PROPERTY DETAILS



**Total Rooms**  
**Bedrooms** 0  
**Baths Full** 0  
**Baths Half** 0  
**Year Built**  
**Type**  
**Block Number** 761  
**Listing #** 592596  
**Taxes**

### COMMENTS

*Lowest price buildable parcel on Chris Gaupp Rd, 350 feet of frontage, 1.7 acres of high and dry land with no wetlands or wetlands buffers, adjacent property was for sale if you need additional property, situated near Stockton College, Atlantic Regional Medical Centre and Bacharach Institute for Rehabilitation, Atlanticare. Excellent access to Rt 30, Garden State Parkway, ...*

### PROPERTY FEATURES

### CONTACT



Ask for Susan Goetz  
 Berger Realty Inc  
 3160 Asbury Avenue, Ocean City  
 Call: 609-380-8757  
 Email to: goe@bergerrealty.com

Scan to see Property page.



# Berger Realty

Since 1926



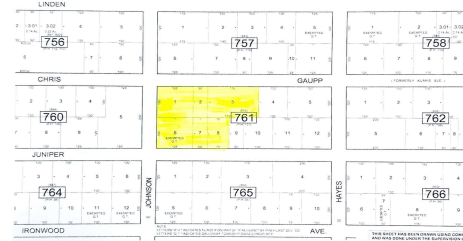
Berger Realty, Inc.  
3160 Asbury Avenue  
Ocean City, NJ 08226  
1-877-237-4371 / 609-399-0076  
info@bergerrealty.com



Chris Gaupp, Galloway Township, NJ, 08205

Price \$499,000.00

### PROPERTY DETAILS



**Total Rooms**  
**Bedrooms** 0  
**Baths Full** 0  
**Baths Half** 0  
**Year Built**  
**Type**  
**Block Number** 761  
**Listing #** 592596  
**Taxes**

### COMMENTS

*Lowest price buildable parcel on Chris Gaupp Rd, 350 feet of frontage, 1.7 acres of high and dry land with no wetlands or wetlands buffers, adjacent property was for sale if you need additional property, situated near Stockton College, Atlantic Regional Medical Centre and Bacharach Institute for Rehabilitation, Atlanticare. Excellent access to Rt 30, Garden State Parkway, ...*

### PROPERTY FEATURES

### CONTACT



Ask for Susan Goetz  
 Berger Realty Inc  
 3160 Asbury Avenue, Ocean City  
 Call: 609-380-8757  
 Email to: goe@bergerrealty.com

Scan to see Property page.

