

# Berger Realty

Since 1926



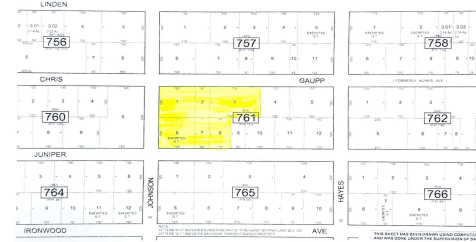
Berger Realty, Inc.  
3160 Asbury Avenue  
Ocean City, NJ 08226  
1-877-237-4371 / 609-399-0076  
info@bergerrealty.com



Chris Gaupp, Galloway Township, NJ, 08205

Price \$499,000.00

### PROPERTY DETAILS



Total Rooms	
Bedrooms	0
Baths Full	0
Baths Half	0
Year Built	
Type	
Block Number	761
Listing #	592596
Taxes	

### COMMENTS

*Lowest price buildable parcel on Chris Gaupp Rd, 350 feet of frontage, 1.7 acres of high and dry land with no wetlands or wetlands buffers, adjacent property was for sale if you need additional property, situated near Stockton College, Atlantic Regional Medical Centre and Bacharach Institute for Rehabilitation, Atlanticare. Excellent access to Rt 30, Garden State Parkway, ...*

### PROPERTY FEATURES

### CONTACT



Ask for Domenic Ballerini  
Berger Realty Inc  
3160 Asbury Avenue, Ocean City  
Call: 856-524-8122  
Email to: [dvb@bergerrealty.com](mailto:dvb@bergerrealty.com)

Scan to see Property page.



# Berger Realty

Since 1926



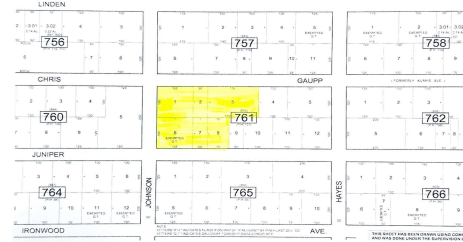
Berger Realty, Inc.  
3160 Asbury Avenue  
Ocean City, NJ 08226  
1-877-237-4371 / 609-399-0076  
info@bergerrealty.com



Chris Gaupp, Galloway Township, NJ, 08205

Price \$499,000.00

### PROPERTY DETAILS



Total Rooms	
Bedrooms	0
Baths Full	0
Baths Half	0
Year Built	
Type	
Block Number	761
Listing #	592596
Taxes	

### COMMENTS

*Lowest price buildable parcel on Chris Gaupp Rd, 350 feet of frontage, 1.7 acres of high and dry land with no wetlands or wetlands buffers, adjacent property was for sale if you need additional property, situated near Stockton College, Atlantic Regional Medical Centre and Bacharach Institute for Rehabilitation, Atlanticare. Excellent access to Rt 30, Garden State Parkway, ...*

### PROPERTY FEATURES

### CONTACT



Ask for Domenic Ballerini  
Berger Realty Inc  
3160 Asbury Avenue, Ocean City  
Call: 856-524-8122  
Email to: [dvb@bergerrealty.com](mailto:dvb@bergerrealty.com)

Scan to see Property page.

