

Berger Realty

Since 1926

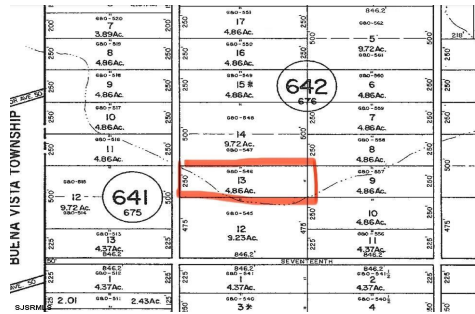


Berger Realty, Inc
1330 Bay Avenue
Ocean City, NJ 08226
609-391-1330/609-391-1300
info@bergerrealty.com



Estell, Mays Landing, NJ, 08330

Price \$15,000.00



PROPERTY DETAILS

Total Rooms	
Bedrooms	0
Baths Full	0
Baths Half	0
Year Built	
Type	
Block Number	642
Listing #	592574
Taxes	202.00

COMMENTS

4.86 acres in an R10 zone, perfect for credits, transfer or outdoor activities. Buyer is responsible to obtain their own due diligence on this property...

PROPERTY FEATURES

CONTACT



Ask for John Tonkinson
Berger Realty Inc
1330 Bay Avenue, Ocean City
Call: 609-741-7841
Email to: jtn@bergerrealty.com

Scan to see Property page.



Berger Realty

Since 1926

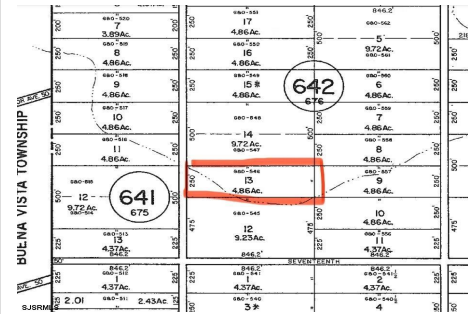


Berger Realty, Inc
1330 Bay Avenue
Ocean City, NJ 08226
609-391-1330/609-391-1300
info@bergerrealty.com



Estell, Mays Landing, NJ, 08330

Price \$15,000.00



PROPERTY DETAILS

Total Rooms	
Bedrooms	0
Baths Full	0
Baths Half	0
Year Built	
Type	
Block Number	642
Listing #	592574
Taxes	202.00

COMMENTS

4.86 acres in an R10 zone, perfect for credits, transfer or outdoor activities. Buyer is responsible to obtain their own due diligence on this property...

PROPERTY FEATURES

CONTACT



Ask for John Tonkinson
Berger Realty Inc
1330 Bay Avenue, Ocean City
Call: 609-741-7841
Email to: jtn@bergerrealty.com

Scan to see Property page.

