

# Berger Realty

Since 1926



Berger Realty, Inc.  
3160 Asbury Avenue  
Ocean City, NJ 08226  
1-877-237-4371 / 609-399-0076  
info@bergerrealty.com



Estell, Mays Landing, NJ, 08330

Price \$15,000.00



### PROPERTY DETAILS

Total Rooms	
Bedrooms	0
Baths Full	0
Baths Half	0
Year Built	
Type	
Block Number	642
Listing #	592574
Taxes	202.00

### COMMENTS

4.86 acres in an R10 zone, perfect for credits, transfer or outdoor activities. Buyer is responsible to obtain their own due diligence on this property...

### PROPERTY FEATURES

### CONTACT



Ask for Graham Ginn  
Berger Realty Inc  
3160 Asbury Avenue, Ocean City  
Call: 609-602-4884  
Email to: gmg@bergerrealty.com  
https://www.ocnj.com

Scan to see Property page.



# Berger Realty

Since 1926

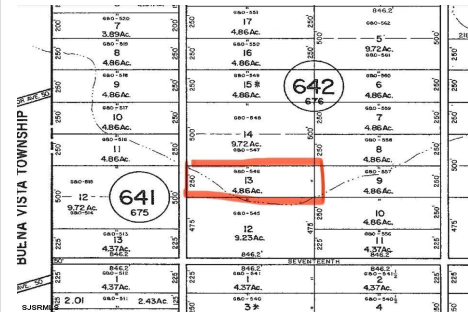


Berger Realty, Inc.  
3160 Asbury Avenue  
Ocean City, NJ 08226  
1-877-237-4371 / 609-399-0076  
info@bergerrealty.com



Estell, Mays Landing, NJ, 08330

Price \$15,000.00



### PROPERTY DETAILS

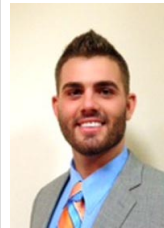
Total Rooms	
Bedrooms	0
Baths Full	0
Baths Half	0
Year Built	
Type	
Block Number	642
Listing #	592574
Taxes	202.00

### COMMENTS

4.86 acres in an R10 zone, perfect for credits, transfer or outdoor activities. Buyer is responsible to obtain their own due diligence on this property...

### PROPERTY FEATURES

### CONTACT



Ask for Graham Ginn  
Berger Realty Inc  
3160 Asbury Avenue, Ocean City  
Call: 609-602-4884  
Email to: gmg@bergerrealty.com  
https://www.ocnj.com

Scan to see Property page.

