

Berger Realty

Since 1926



Berger Realty, Inc.
3160 Asbury Avenue
Ocean City, NJ 08226
1-877-237-4371 / 609-399-0076
info@bergerrealty.com



Estell, Mays Landing, NJ, 08330

Price \$15,000.00



PROPERTY DETAILS

Total Rooms	
Bedrooms	0
Baths Full	0
Baths Half	0
Year Built	
Type	
Block Number	642
Listing #	592574
Taxes	202.00

COMMENTS

4.86 acres in an R10 zone, perfect for credits, transfer or outdoor activities. Buyer is responsible to obtain their own due diligence on this property....

PROPERTY FEATURES

CONTACT



Ask for Domenic Ballerini
Berger Realty Inc
3160 Asbury Avenue, Ocean City
Call: 856-524-8122
Email to: dvb@bergerrealty.com

Scan to see Property page.



Berger Realty

Since 1926

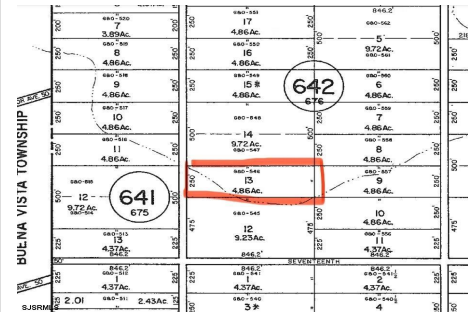


Berger Realty, Inc.
3160 Asbury Avenue
Ocean City, NJ 08226
1-877-237-4371 / 609-399-0076
info@bergerrealty.com



Estell, Mays Landing, NJ, 08330

Price \$15,000.00



PROPERTY DETAILS

Total Rooms	
Bedrooms	0
Baths Full	0
Baths Half	0
Year Built	
Type	
Block Number	642
Listing #	592574
Taxes	202.00

COMMENTS

4.86 acres in an R10 zone, perfect for credits, transfer or outdoor activities. Buyer is responsible to obtain their own due diligence on this property....

PROPERTY FEATURES

CONTACT



Ask for Domenic Ballerini
Berger Realty Inc
3160 Asbury Avenue, Ocean City
Call: 856-524-8122
Email to: dvb@bergerrealty.com

Scan to see Property page.

