

# Berger Realty

Since 1926



Berger Realty, Inc  
1330 Bay Avenue  
Ocean City, NJ 08226  
609-391-1330/609-391-1300  
info@bergerrealty.com



Estell, Mays Landing, NJ, 08330

Price \$15,000.00



## PROPERTY DETAILS

Total Rooms	0
Bedrooms	0
Baths Full	0
Baths Half	0
Year Built	
Type	
Block Number	642
Listing #	592574
Taxes	202.00

## COMMENTS

4.86 acres in an R10 zone, perfect for credits, transfer or outdoor activities. Buyer is responsible to obtain their own due diligence on this property....

## PROPERTY FEATURES

## CONTACT



Ask for Adelaide Misal  
Berger Realty Inc  
1330 Bay Avenue, Ocean City  
Call: 609-204-4084  
Email to: ahm@bergerrealty.com

Scan to see Property page.



# Berger Realty

Since 1926

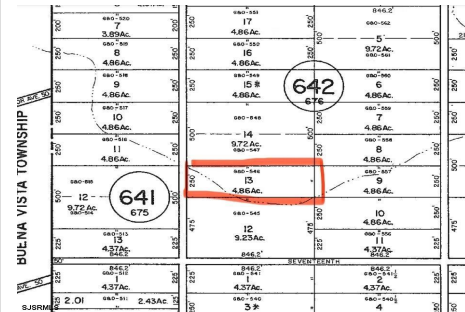


Berger Realty, Inc  
1330 Bay Avenue  
Ocean City, NJ 08226  
609-391-1330/609-391-1300  
info@bergerrealty.com



Estell, Mays Landing, NJ, 08330

Price \$15,000.00



## PROPERTY DETAILS

Total Rooms	0
Bedrooms	0
Baths Full	0
Baths Half	0
Year Built	
Type	
Block Number	642
Listing #	592574
Taxes	202.00

## COMMENTS

4.86 acres in an R10 zone, perfect for credits, transfer or outdoor activities. Buyer is responsible to obtain their own due diligence on this property....

## PROPERTY FEATURES

## CONTACT



Ask for Adelaide Misal  
Berger Realty Inc  
1330 Bay Avenue, Ocean City  
Call: 609-204-4084  
Email to: ahm@bergerrealty.com

Scan to see Property page.

