



Berger Realty, Inc.
3160 Asbury Avenue
Ocean City, NJ 08226
1-877-237-4371 / 609-399-0076
info@bergerrealty.com



621 New York, Absecon, NJ, 08205

Price \$125,000.00

PHOTO NOT AVAILABLE



PROPERTY DETAILS

Total Rooms	
Bedrooms	0
Baths Full	0
Baths Half	0
Year Built	
Type	
Block Number	1007.03
Listing #	592552
Taxes	3732.00

COMMENTS

Commercial/Residential property for sale. Main value is in the land. CC-2 zoned with over 100 feet of frontage on S. New York Rd. (Rt. 9). Corner lot. Great investment opportunity. Located down the road from the Seaview Marriott. Possible subdivision...

PROPERTY FEATURES

CONTACT



Ask for Margarita Kobilianets
Berger Realty Inc
3160 Asbury Avenue, Ocean City
Call: 609-674-3417
Email to: mak@bergerrealty.com

Scan to see Property page.



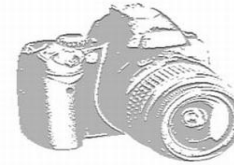
Berger Realty, Inc.
3160 Asbury Avenue
Ocean City, NJ 08226
1-877-237-4371 / 609-399-0076
info@bergerrealty.com



621 New York, Absecon, NJ, 08205

Price \$125,000.00

PHOTO NOT AVAILABLE



PROPERTY DETAILS

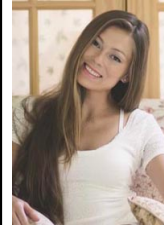
Total Rooms	
Bedrooms	0
Baths Full	0
Baths Half	0
Year Built	
Type	
Block Number	1007.03
Listing #	592552
Taxes	3732.00

COMMENTS

Commercial/Residential property for sale. Main value is in the land. CC-2 zoned with over 100 feet of frontage on S. New York Rd. (Rt. 9). Corner lot. Great investment opportunity. Located down the road from the Seaview Marriott. Possible subdivision...

PROPERTY FEATURES

CONTACT



Ask for Margarita Kobilianets
Berger Realty Inc
3160 Asbury Avenue, Ocean City
Call: 609-674-3417
Email to: mak@bergerrealty.com

Scan to see Property page.

