

# Berger Realty

Since 1926



Berger Realty, Inc.  
3160 Asbury Avenue  
Ocean City, NJ 08226  
1-877-237-4371 / 609-399-0076  
info@bergerrealty.com



635 California, Pleasantville, NJ, 08201

Price \$299,000.00

### PROPERTY DETAILS

Total Rooms	
Bedrooms	0
Baths Full	0
Baths Half	0
Year Built	
Type	
Block Number	200
Listing #	592284
Taxes	4790.00



### COMMENTS

**INVESTOR ALERT!** Great development potential on almost 1 - 1/4 acres. Build your dream home or possible subdivision into several lots (Buyers Due Diligence). Peterson's Way development adjoins this property. Buyer responsible for all permits/subdivision/variance/etc....

### PROPERTY FEATURES

### CONTACT



Ask for Margarita Kobilianets  
Berger Realty Inc  
3160 Asbury Avenue, Ocean City  
Call: 609-674-3417  
Email to: mak@bergerrealty.com

Scan to see Property page.



# Berger Realty

Since 1926



Berger Realty, Inc.  
3160 Asbury Avenue  
Ocean City, NJ 08226  
1-877-237-4371 / 609-399-0076  
info@bergerrealty.com



635 California, Pleasantville, NJ, 08201

Price \$299,000.00

### PROPERTY DETAILS

Total Rooms	
Bedrooms	0
Baths Full	0
Baths Half	0
Year Built	
Type	
Block Number	200
Listing #	592284
Taxes	4790.00

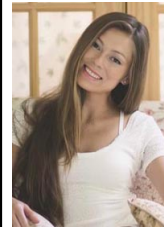


### COMMENTS

**INVESTOR ALERT!** Great development potential on almost 1 - 1/4 acres. Build your dream home or possible subdivision into several lots (Buyers Due Diligence). Peterson's Way development adjoins this property. Buyer responsible for all permits/subdivision/variance/etc....

### PROPERTY FEATURES

### CONTACT



Ask for Margarita Kobilianets  
Berger Realty Inc  
3160 Asbury Avenue, Ocean City  
Call: 609-674-3417  
Email to: mak@bergerrealty.com

Scan to see Property page.

