



Berger Realty, Inc.
3160 Asbury Avenue
Ocean City, NJ 08226
1-877-237-4371 / 609-399-0076
info@bergerrealty.com



1916 Riverside, Atlantic City, NJ, 08401

Price \$139,000.00

PROPERTY DETAILS



Total Rooms	0
Bedrooms	0
Baths Full	0
Baths Half	0
Year Built	
Type	
Block Number	670
Listing #	592201
Taxes	232300.00

COMMENTS

On The Water in Desirable Venice Park! Updated Bulkhead and the house next door is also on the market. Why not buy both and Have a Big beautiful home on the water!! Venice Park is the Gateway to AC!!!!...

PROPERTY FEATURES

CONTACT



Ask for Denise Kelley
Berger Realty Inc
3160 Asbury Avenue, Ocean City
Call: 609-703-2706
Email to: dlk@bergerrealty.com

Scan to see Property page.



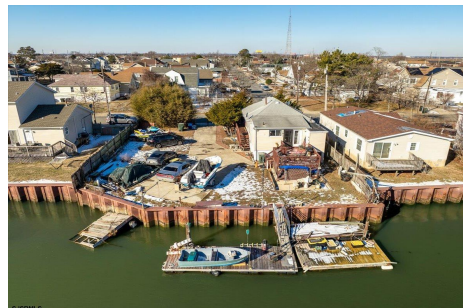
Berger Realty, Inc.
3160 Asbury Avenue
Ocean City, NJ 08226
1-877-237-4371 / 609-399-0076
info@bergerrealty.com



1916 Riverside, Atlantic City, NJ, 08401

Price \$139,000.00

PROPERTY DETAILS



Total Rooms	0
Bedrooms	0
Baths Full	0
Baths Half	0
Year Built	
Type	
Block Number	670
Listing #	592201
Taxes	232300.00

COMMENTS

On The Water in Desirable Venice Park! Updated Bulkhead and the house next door is also on the market. Why not buy both and Have a Big beautiful home on the water!! Venice Park is the Gateway to AC!!!!...

PROPERTY FEATURES

CONTACT



Ask for Denise Kelley
Berger Realty Inc
3160 Asbury Avenue, Ocean City
Call: 609-703-2706
Email to: dlk@bergerrealty.com

Scan to see Property page.

