

Berger Realty

Since 1926



Berger Realty, Inc.
3160 Asbury Avenue
Ocean City, NJ 08226
1-877-237-4371 / 609-399-0076
info@bergerrealty.com



Berger Realty

Since 1926



Berger Realty, Inc.
3160 Asbury Avenue
Ocean City, NJ 08226
1-877-237-4371 / 609-399-0076
info@bergerrealty.com



871 Corkery, Washington Township, NJ, 08094

Price \$1,100,000.00



PROPERTY DETAILS

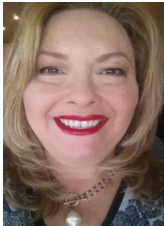
Total Rooms	
Bedrooms	0
Baths Full	0
Baths Half	0
Year Built	
Type	
Block Number	11002
Listing #	592090
Taxes	9942.00

COMMENTS

Prime Investment Opportunity – Multi-Family Property on 10.2 Acres! A builder’s dream and an excellent investment opportunity, this 4-family residential property sits on 10.2 acres in a high-demand area with strong rental income potential. Property Features: Building Type: 4-Family Residential Total Land: 10.2 Acres Units: 4 Fully Rented (Month-to-Month Lease) Unit B...

PROPERTY FEATURES

CONTACT



Ask for Theresa Maina
Berger Realty Inc
3160 Asbury Avenue, Ocean City
Call: 609-703-7725
Email to: tam@bergerrealty.com

Scan to see Property page.



871 Corkery, Washington Township, NJ, 08094

Price \$1,100,000.00



PROPERTY DETAILS

Total Rooms	
Bedrooms	0
Baths Full	0
Baths Half	0
Year Built	
Type	
Block Number	11002
Listing #	592090
Taxes	9942.00

COMMENTS

Prime Investment Opportunity – Multi-Family Property on 10.2 Acres! A builder’s dream and an excellent investment opportunity, this 4-family residential property sits on 10.2 acres in a high-demand area with strong rental income potential. Property Features: Building Type: 4-Family Residential Total Land: 10.2 Acres Units: 4 Fully Rented (Month-to-Month Lease) Unit B...

PROPERTY FEATURES

CONTACT



Ask for Theresa Maina
Berger Realty Inc
3160 Asbury Avenue, Ocean City
Call: 609-703-7725
Email to: tam@bergerrealty.com

Scan to see Property page.

