

Berger Realty

Since 1926



Berger Realty, Inc.
3160 Asbury Avenue
Ocean City, NJ 08226
1-877-237-4371 / 609-399-0076
info@bergerrealty.com



124 Church, Egg Harbor Township, NJ, 08234

Price \$79,900.00

PROPERTY DETAILS

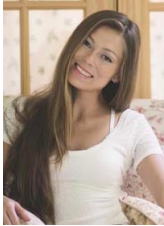
Total Rooms	
Bedrooms	0
Baths Full	0
Baths Half	0
Year Built	
Type	
Block Number	2208
Listing #	592030
Taxes	5175.00

COMMENTS

Don't miss this opportunity! Situated on a quiet dead end street in Egg Harbor Township, the property borders Northfield and Pleasantville and is close to public transportation and the Walmart shopping center on the Black Horse Pike. The property has a residential tear down or for potential buyer to confirm the potential usage of the foot print if so desired. Irregular si...

PROPERTY FEATURES

CONTACT



Ask for Margarita Kobilianets
Berger Realty Inc
3160 Asbury Avenue, Ocean City
Call: 609-674-3417
Email to: mak@bergerrealty.com

Scan to see Property page.



Berger Realty

Since 1926



Berger Realty, Inc.
3160 Asbury Avenue
Ocean City, NJ 08226
1-877-237-4371 / 609-399-0076
info@bergerrealty.com



124 Church, Egg Harbor Township, NJ, 08234

Price \$79,900.00

PROPERTY DETAILS

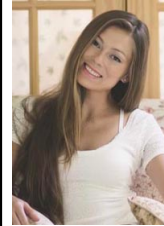
Total Rooms	
Bedrooms	0
Baths Full	0
Baths Half	0
Year Built	
Type	
Block Number	2208
Listing #	592030
Taxes	5175.00

COMMENTS

Don't miss this opportunity! Situated on a quiet dead end street in Egg Harbor Township, the property borders Northfield and Pleasantville and is close to public transportation and the Walmart shopping center on the Black Horse Pike. The property has a residential tear down or for potential buyer to confirm the potential usage of the foot print if so desired. Irregular si...

PROPERTY FEATURES

CONTACT



Ask for Margarita Kobilianets
Berger Realty Inc
3160 Asbury Avenue, Ocean City
Call: 609-674-3417
Email to: mak@bergerrealty.com

Scan to see Property page.

