

# Berger Realty

Since 1926



Berger Realty, Inc  
1330 Bay Avenue  
Ocean City, NJ 08226  
609-391-1330/609-391-1300  
info@bergerrealty.com



124 Church, Egg Harbor Township, NJ, 08234

Price \$79,900.00

## PROPERTY DETAILS

Total Rooms	
Bedrooms	0
Baths Full	0
Baths Half	0
Year Built	
Type	
Block Number	2208
Listing #	592030
Taxes	5175.00

## COMMENTS

*Don't miss this opportunity! Situated on a quiet dead end street in Egg Harbor Township, the property borders Northfield and Pleasantville and is close to public transportation and the Walmart shopping center on the Black Horse Pike. The property has a residential tear down or for potential buyer to confirm the potential usage of the foot print if so desired. Irregular si...*

## PROPERTY FEATURES

## CONTACT



Ask for Joanne Kelly  
Berger Realty Inc  
1330 Bay Avenue, Ocean City  
Call: 609-425-2106  
Email to: jmk@bergerrealty.com

Scan to see Property page.



# Berger Realty

Since 1926



Berger Realty, Inc  
1330 Bay Avenue  
Ocean City, NJ 08226  
609-391-1330/609-391-1300  
info@bergerrealty.com



124 Church, Egg Harbor Township, NJ, 08234

Price \$79,900.00

## PROPERTY DETAILS

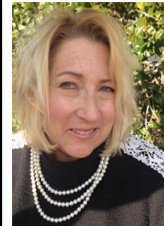
Total Rooms	
Bedrooms	0
Baths Full	0
Baths Half	0
Year Built	
Type	
Block Number	2208
Listing #	592030
Taxes	5175.00

## COMMENTS

*Don't miss this opportunity! Situated on a quiet dead end street in Egg Harbor Township, the property borders Northfield and Pleasantville and is close to public transportation and the Walmart shopping center on the Black Horse Pike. The property has a residential tear down or for potential buyer to confirm the potential usage of the foot print if so desired. Irregular si...*

## PROPERTY FEATURES

## CONTACT



Ask for Joanne Kelly  
Berger Realty Inc  
1330 Bay Avenue, Ocean City  
Call: 609-425-2106  
Email to: jmk@bergerrealty.com

Scan to see Property page.

