

Berger Realty

Since 1928

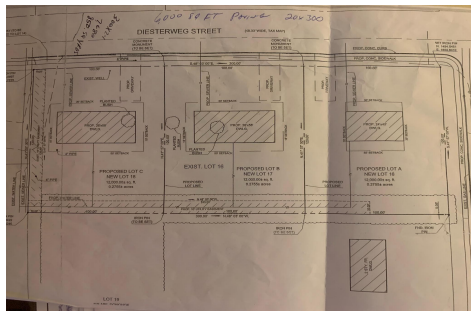


Berger Realty, Inc.
3160 Asbury Avenue
Ocean City, NJ 08226
1-877-237-4371 / 609-399-0076
info@bergerrealty.com



Lot 18 Diesterweg, Egg Harbor City, NJ, 08215

Price \$52,000.00



PROPERTY DETAILS

| | |
|--------------|---------|
| Total Rooms | |
| Bedrooms | 0 |
| Baths Full | 0 |
| Baths Half | 0 |
| Year Built | |
| Type | |
| Block Number | 58.07 |
| Listing # | 591647 |
| Taxes | 1694.00 |

COMMENTS

Three buildable lots available in desirable Egg Harbor City. Each lot is already subdivided and has public water and sewer available in the street (per seller). Check out all the listings: 649 Bremen, Lot 17 Diesterweg St, Lot 18 Diesterweg St. Lots sold as is. Buyer to do due diligence regarding their plans to build with Egg Harbor City directly...

PROPERTY FEATURES

CONTACT



Ask for Patricia (Trish) Spengler
Berger Realty Inc
3160 Asbury Avenue, Ocean City
Call: 609-425-9254
Email to: pjs@bergerrealty.com

Scan to see Property page.



Berger Realty

Since 1928

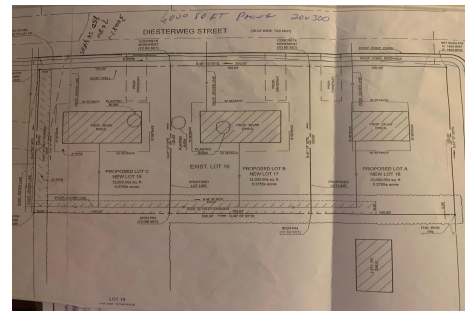


Berger Realty, Inc.
3160 Asbury Avenue
Ocean City, NJ 08226
1-877-237-4371 / 609-399-0076
info@bergerrealty.com



Lot 18 Diesterweg, Egg Harbor City, NJ, 08215

Price \$52,000.00



PROPERTY DETAILS

| | |
|--------------|---------|
| Total Rooms | |
| Bedrooms | 0 |
| Baths Full | 0 |
| Baths Half | 0 |
| Year Built | |
| Type | |
| Block Number | 58.07 |
| Listing # | 591647 |
| Taxes | 1694.00 |

COMMENTS

Three buildable lots available in desirable Egg Harbor City. Each lot is already subdivided and has public water and sewer available in the street (per seller). Check out all the listings: 649 Bremen, Lot 17 Diesterweg St, Lot 18 Diesterweg St. Lots sold as is. Buyer to do due diligence regarding their plans to build with Egg Harbor City directly...

PROPERTY FEATURES

CONTACT



Ask for Patricia (Trish) Spengler
Berger Realty Inc
3160 Asbury Avenue, Ocean City
Call: 609-425-9254
Email to: pjs@bergerrealty.com

Scan to see Property page.

