

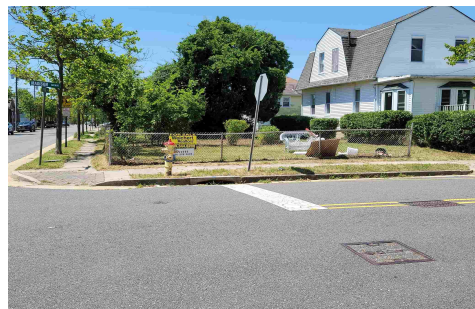


Berger Realty, Inc.  
3160 Asbury Avenue  
Ocean City, NJ 08226  
1-877-237-4371 / 609-399-0076  
info@bergerrealty.com



1404 Madison, Atlantic City, NJ, 08401

Price \$45,000.00



#### PROPERTY DETAILS

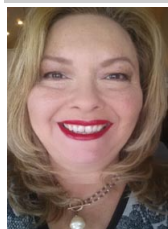
Total Rooms	0
Bedrooms	0
Baths Full	0
Baths Half	0
Year Built	
Type	
Block Number	684
Listing #	591006
Taxes	415.00

#### COMMENTS

!"3000 sqft In Venice Park Atlantic City.... Close to Absecon Blvd and Penrose Canal. Buy now with less than a Bitcoin or ask about Private Financing Available Starting at 10%...

#### PROPERTY FEATURES

#### CONTACT



Ask for Theresa Maina  
Berger Realty Inc  
3160 Asbury Avenue, Ocean City  
Call: 609-703-7725  
Email to: tam@bergerrealty.com

Scan to see Property page.



Berger Realty, Inc.  
3160 Asbury Avenue  
Ocean City, NJ 08226  
1-877-237-4371 / 609-399-0076  
info@bergerrealty.com



1404 Madison, Atlantic City, NJ, 08401

Price \$45,000.00



#### PROPERTY DETAILS

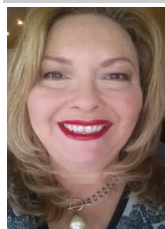
Total Rooms	0
Bedrooms	0
Baths Full	0
Baths Half	0
Year Built	
Type	
Block Number	684
Listing #	591006
Taxes	415.00

#### COMMENTS

!"3000 sqft In Venice Park Atlantic City.... Close to Absecon Blvd and Penrose Canal. Buy now with less than a Bitcoin or ask about Private Financing Available Starting at 10%...

#### PROPERTY FEATURES

#### CONTACT



Ask for Theresa Maina  
Berger Realty Inc  
3160 Asbury Avenue, Ocean City  
Call: 609-703-7725  
Email to: tam@bergerrealty.com

Scan to see Property page.

