

# Berger Realty

Since 1928



Berger Realty, Inc.  
3160 Asbury Avenue  
Ocean City, NJ 08226  
1-877-237-4371 / 609-399-0076  
info@bergerrealty.com



# Berger Realty

Since 1928



Berger Realty, Inc.  
3160 Asbury Avenue  
Ocean City, NJ 08226  
1-877-237-4371 / 609-399-0076  
info@bergerrealty.com



5015 Spruce, Egg Harbor Township, NJ, 08234

Price \$199,900.00



### PROPERTY DETAILS

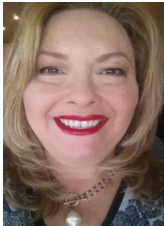
Total Rooms	
Bedrooms	0
Baths Full	0
Baths Half	0
Year Built	
Type	
Block Number	3801
Listing #	591001
Taxes	5366.00

### COMMENTS

Property has over 3 acres of land that can be both residential or commercial. The current building is about 1,500 sq ft that can be used for commercial purposes or build a new home. Offers easy access to Atlantic City & County. Within approximately 4 mile of Parkway & Expressway. Buyer is responsible for all/any approvals from the township. Property is being sold AS-IS....

### PROPERTY FEATURES

### CONTACT



Ask for Theresa Maina  
Berger Realty Inc  
3160 Asbury Avenue, Ocean City  
Call: 609-703-7725  
Email to: tam@bergerrealty.com

Scan to see Property page.



5015 Spruce, Egg Harbor Township, NJ, 08234

Price \$199,900.00



### PROPERTY DETAILS

Total Rooms	
Bedrooms	0
Baths Full	0
Baths Half	0
Year Built	
Type	
Block Number	3801
Listing #	591001
Taxes	5366.00

### COMMENTS

Property has over 3 acres of land that can be both residential or commercial. The current building is about 1,500 sq ft that can be used for commercial purposes or build a new home. Offers easy access to Atlantic City & County. Within approximately 4 mile of Parkway & Expressway. Buyer is responsible for all/any approvals from the township. Property is being sold AS-IS....

### PROPERTY FEATURES

### CONTACT



Ask for Theresa Maina  
Berger Realty Inc  
3160 Asbury Avenue, Ocean City  
Call: 609-703-7725  
Email to: tam@bergerrealty.com

Scan to see Property page.

