



Berger Realty, Inc.  
3160 Asbury Avenue  
Ocean City, NJ 08226  
1-877-237-4371 / 609-399-0076  
info@bergerrealty.com



4 SPATTERDOCK LANE, Linwood, NJ, 08221

Price \$224,900.00



#### PROPERTY DETAILS

|              |         |
|--------------|---------|
| Total Rooms  |         |
| Bedrooms     | 0       |
| Baths Full   | 0       |
| Baths Half   | 0       |
| Year Built   |         |
| Type         |         |
| Block Number | 1       |
| Listing #    | 590974  |
| Taxes        | 3815.00 |

#### COMMENTS

*GREAT LINWOOD HOMESITE WITH MEADOW AND WATERFRONT VIEWS ON A PRIVATE CUL-DE-SAC LOCATION WITH BUILDING APPROVALS. INCLUDES SURVEY, PLOT PLAN AND CAFRA PERMIT....*

#### PROPERTY FEATURES

#### CONTACT



Ask for Sean McGinnis  
Berger Realty Inc  
3160 Asbury Avenue, Ocean City  
Call: 609-703-9955  
Email to: smc@bergerrealty.com

Scan to see Property page.

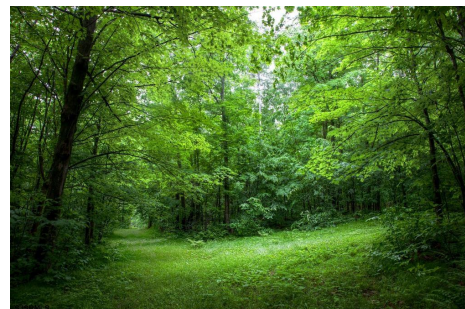


Berger Realty, Inc.  
3160 Asbury Avenue  
Ocean City, NJ 08226  
1-877-237-4371 / 609-399-0076  
info@bergerrealty.com



4 SPATTERDOCK LANE, Linwood, NJ, 08221

Price \$224,900.00



#### PROPERTY DETAILS

|              |         |
|--------------|---------|
| Total Rooms  |         |
| Bedrooms     | 0       |
| Baths Full   | 0       |
| Baths Half   | 0       |
| Year Built   |         |
| Type         |         |
| Block Number | 1       |
| Listing #    | 590974  |
| Taxes        | 3815.00 |

#### COMMENTS

*GREAT LINWOOD HOMESITE WITH MEADOW AND WATERFRONT VIEWS ON A PRIVATE CUL-DE-SAC LOCATION WITH BUILDING APPROVALS. INCLUDES SURVEY, PLOT PLAN AND CAFRA PERMIT....*

#### PROPERTY FEATURES

#### CONTACT



Ask for Sean McGinnis  
Berger Realty Inc  
3160 Asbury Avenue, Ocean City  
Call: 609-703-9955  
Email to: smc@bergerrealty.com

Scan to see Property page.

