

# Berger Realty

Since 1926



Berger Realty, Inc.  
3160 Asbury Avenue  
Ocean City, NJ 08226  
1-877-237-4371 / 609-399-0076  
info@bergerrealty.com



511-521 Pacific, Atlantic City, NJ, 08401

Price \$1,200,000.00

### PROPERTY DETAILS

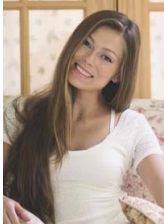
Total Rooms	
Bedrooms	0
Baths Full	0
Baths Half	0
Year Built	
Type	
Block Number	131
Listing #	590722
Taxes	17328.00

### COMMENTS

Totally a strategic and unique property which spans three contiguous lots totaling 17,129 square feet, covering the entire frontage of Pacific Avenue between South Connecticut and Congress Avenues. At this busy intersection, you'll find a well-positioned, two-story, 3,900-square-foot building on the corner lot, directly across from the new luxury apartment complex 600 NoB...

### PROPERTY FEATURES

### CONTACT



Ask for Margarita Kobilianets  
Berger Realty Inc  
3160 Asbury Avenue, Ocean City  
Call: 609-674-3417  
Email to: mak@bergerrealty.com

Scan to see Property page.



# Berger Realty

Since 1926



Berger Realty, Inc.  
3160 Asbury Avenue  
Ocean City, NJ 08226  
1-877-237-4371 / 609-399-0076  
info@bergerrealty.com



511-521 Pacific, Atlantic City, NJ, 08401

Price \$1,200,000.00

### PROPERTY DETAILS

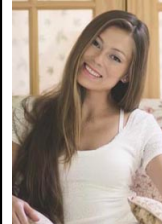
Total Rooms	
Bedrooms	0
Baths Full	0
Baths Half	0
Year Built	
Type	
Block Number	131
Listing #	590722
Taxes	17328.00

### COMMENTS

Totally a strategic and unique property which spans three contiguous lots totaling 17,129 square feet, covering the entire frontage of Pacific Avenue between South Connecticut and Congress Avenues. At this busy intersection, you'll find a well-positioned, two-story, 3,900-square-foot building on the corner lot, directly across from the new luxury apartment complex 600 NoB...

### PROPERTY FEATURES

### CONTACT



Ask for Margarita Kobilianets  
Berger Realty Inc  
3160 Asbury Avenue, Ocean City  
Call: 609-674-3417  
Email to: mak@bergerrealty.com

Scan to see Property page.

