

# Berger Realty

Since 1926



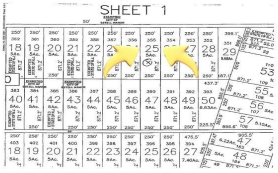
Berger Realty, Inc  
1330 Bay Avenue  
Ocean City, NJ 08226  
609-391-1330/609-391-1300  
info@bergerrealty.com



165 6th, Estell Manor, NJ, 08319

Price \$50,000.00

### PROPERTY DETAILS



Total Rooms	0
Bedrooms	0
Baths Full	0
Baths Half	0
Year Built	
Type	
Block Number	10
Listing #	590716
Taxes	362.00

SJBRML5

### COMMENTS

*Vacant land 5 acre wooded lot partially cleared. Buyer will be responsible to do any and all due diligence. Seller has had this land for many years but any approvals have long since expired. Contact listing agent if you have any questions....*

### PROPERTY FEATURES

### CONTACT



Ask for Joan S. Spencer  
Berger Realty Inc  
1330 Bay Avenue, Ocean City  
Call: 609-204-3027  
Email to: jss@bergerrealty.com

Scan to see Property page.



# Berger Realty

Since 1926



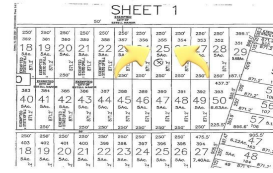
Berger Realty, Inc  
1330 Bay Avenue  
Ocean City, NJ 08226  
609-391-1330/609-391-1300  
info@bergerrealty.com



165 6th, Estell Manor, NJ, 08319

Price \$50,000.00

### PROPERTY DETAILS



Total Rooms	0
Bedrooms	0
Baths Full	0
Baths Half	0
Year Built	
Type	
Block Number	10
Listing #	590716
Taxes	362.00

SJBRML5

### COMMENTS

*Vacant land 5 acre wooded lot partially cleared. Buyer will be responsible to do any and all due diligence. Seller has had this land for many years but any approvals have long since expired. Contact listing agent if you have any questions....*

### PROPERTY FEATURES

### CONTACT



Ask for Joan S. Spencer  
Berger Realty Inc  
1330 Bay Avenue, Ocean City  
Call: 609-204-3027  
Email to: jss@bergerrealty.com

Scan to see Property page.

