

# Berger Realty

Since 1926



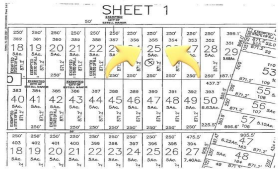
Berger Realty, Inc.  
3160 Asbury Avenue  
Ocean City, NJ 08226  
1-877-237-4371 / 609-399-0076  
info@bergerrealty.com



165 6th, Estell Manor, NJ, 08319

Price \$50,000.00

### PROPERTY DETAILS



Total Rooms	0
Bedrooms	0
Baths Full	0
Baths Half	0
Year Built	
Type	
Block Number	10
Listing #	590716
Taxes	362.00

### COMMENTS

Vacant land 5 acre wooded lot partially cleared. Buyer will be responsible to do any and all due diligence. Seller has had this land for many years but any approvals have long since expired. Contact listing agent if you have any questions....

### PROPERTY FEATURES

### CONTACT



Ask for Joyce McMahon  
Berger Realty Inc  
3160 Asbury Avenue, Ocean City  
Call:  
Email to: [jmm@bergerrealty.com](mailto:jmm@bergerrealty.com)

Scan to see Property page.



# Berger Realty

Since 1926



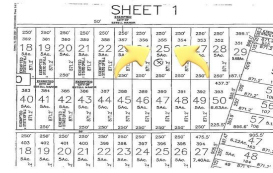
Berger Realty, Inc.  
3160 Asbury Avenue  
Ocean City, NJ 08226  
1-877-237-4371 / 609-399-0076  
info@bergerrealty.com



165 6th, Estell Manor, NJ, 08319

Price \$50,000.00

### PROPERTY DETAILS



Total Rooms	0
Bedrooms	0
Baths Full	0
Baths Half	0
Year Built	
Type	
Block Number	10
Listing #	590716
Taxes	362.00

### COMMENTS

Vacant land 5 acre wooded lot partially cleared. Buyer will be responsible to do any and all due diligence. Seller has had this land for many years but any approvals have long since expired. Contact listing agent if you have any questions....

### PROPERTY FEATURES

### CONTACT



Ask for Joyce McMahon  
Berger Realty Inc  
3160 Asbury Avenue, Ocean City  
Call:  
Email to: [jmm@bergerrealty.com](mailto:jmm@bergerrealty.com)

Scan to see Property page.

