

Berger Realty

Since 1928



Berger Realty, Inc.
3160 Asbury Avenue
Ocean City, NJ 08226
1-877-237-4371 / 609-399-0076
info@bergerrealty.com



4176 Drosera, Mays Landing, NJ, 08330

Price \$600,000.00



PROPERTY DETAILS

| | |
|--------------|---------------|
| Total Rooms | 10 |
| Bedrooms | 5 |
| Baths Full | 3 |
| Baths Half | 0 |
| Year Built | 1978 |
| Type | Single Family |
| Block Number | 1330 |
| Listing # | 590691 |
| Taxes | 7895.00 |

COMMENTS

Welcome to your Dreamy new Domicile on Drosera St. This beautifully renovated home sits on a corner lot with over 2 acres in Mays Landing with a finished basement for over 4000 SQUARE feet of usable space. This home offers luxury, versatility, and an abundance of space. This expansive property features 5 bedrooms, 3 bathrooms, a two car garage, designed to accommodate mult...

PROPERTY FEATURES

| | | | |
|--------------------|-----------------|-----------------|--------------------|
| OutsideFeatures | ParkingGarage | OtherRooms | AppliancesIncluded |
| Pool-In Ground | Attached Garage | Den/TV Room | Dishwasher |
| Porch | Two Car | Dining Room | Dryer |
| Porch Screened | | In-Law Quarters | Gas Stove |
| Shed | | Storage Attic | Refrigerator |
| Sprinkler System | | | Washer |
| Basement | Heating | Cooling | Water |
| 6 Ft. or More Head | Gas-Natural | Central | Well |
| Room | | | |
| Finished | | | |
| Full | | | |
| Heated | | | |
| Sewer | | | |
| Septic | | | |

CONTACT



Ask for Margarita Kobilianets
Berger Realty Inc
3160 Asbury Avenue, Ocean City
Call: 609-674-3417
Email to: mak@bergerrealty.com

Scan to see Property page.



Berger Realty

Since 1928



Berger Realty, Inc.
3160 Asbury Avenue
Ocean City, NJ 08226
1-877-237-4371 / 609-399-0076
info@bergerrealty.com



4176 Drosera, Mays Landing, NJ, 08330

Price \$600,000.00



PROPERTY DETAILS

| | |
|--------------|---------------|
| Total Rooms | 10 |
| Bedrooms | 5 |
| Baths Full | 3 |
| Baths Half | 0 |
| Year Built | 1978 |
| Type | Single Family |
| Block Number | 1330 |
| Listing # | 590691 |
| Taxes | 7895.00 |

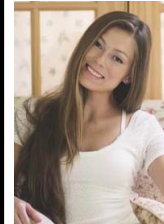
COMMENTS

Welcome to your Dreamy new Domicile on Drosera St. This beautifully renovated home sits on a corner lot with over 2 acres in Mays Landing with a finished basement for over 4000 SQUARE feet of usable space. This home offers luxury, versatility, and an abundance of space. This expansive property features 5 bedrooms, 3 bathrooms, a two car garage, designed to accommodate mult...

PROPERTY FEATURES

| | | | |
|--------------------|-----------------|-----------------|--------------------|
| OutsideFeatures | ParkingGarage | OtherRooms | AppliancesIncluded |
| Pool-In Ground | Attached Garage | Den/TV Room | Dishwasher |
| Porch | Two Car | Dining Room | Dryer |
| Porch Screened | | In-Law Quarters | Gas Stove |
| Shed | | Storage Attic | Refrigerator |
| Sprinkler System | | | Washer |
| Basement | Heating | Cooling | Water |
| 6 Ft. or More Head | Gas-Natural | Central | Well |
| Room | | | |
| Finished | | | |
| Full | | | |
| Heated | | | |
| Sewer | | | |
| Septic | | | |

CONTACT



Ask for Margarita Kobilianets
Berger Realty Inc
3160 Asbury Avenue, Ocean City
Call: 609-674-3417
Email to: mak@bergerrealty.com

Scan to see Property page.

