

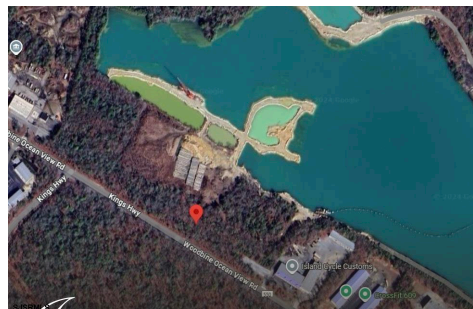


Berger Realty, Inc.
3160 Asbury Avenue
Ocean City, NJ 08226
1-877-237-4371 / 609-399-0076
info@bergerrealty.com



1 Woodbine Oceanview, Dennis Township, NJ, 08270

Price \$130,000.00



PROPERTY DETAILS

Total Rooms	
Bedrooms	0
Baths Full	0
Baths Half	0
Year Built	
Type	
Block Number	224
Listing #	590512
Taxes	1104.00

COMMENTS

Opportunity to Own Expansive Land in Cape May County! This is your chance to secure a rare 38-acre parcel of conserved land nestled off Woodbine Oceanview Road in Dennis Township. Surrounded by lush, mature trees, this property offers the perfect setting for hunting, woodcutting, or simply enjoying nature's beauty. With endless possibilities for use, this large, seclude...

PROPERTY FEATURES

CONTACT

Berger Realty Inc
3160 Asbury Ave.
Ocean City, NJ 08226
Call: (609) 399-0076
Email to: info@bergerrealty.com
Web: www.bergerrealty.com

Scan to see Property page.

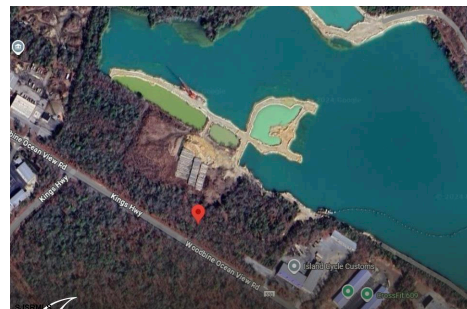


Berger Realty, Inc.
3160 Asbury Avenue
Ocean City, NJ 08226
1-877-237-4371 / 609-399-0076
info@bergerrealty.com



1 Woodbine Oceanview, Dennis Township, NJ, 08270

Price \$130,000.00



PROPERTY DETAILS

Total Rooms	
Bedrooms	0
Baths Full	0
Baths Half	0
Year Built	
Type	
Block Number	224
Listing #	590512
Taxes	1104.00

COMMENTS

Opportunity to Own Expansive Land in Cape May County! This is your chance to secure a rare 38-acre parcel of conserved land nestled off Woodbine Oceanview Road in Dennis Township. Surrounded by lush, mature trees, this property offers the perfect setting for hunting, woodcutting, or simply enjoying nature's beauty. With endless possibilities for use, this large, seclude...

PROPERTY FEATURES

CONTACT

Berger Realty Inc
3160 Asbury Ave.
Ocean City, NJ 08226
Call: (609) 399-0076
Email to: info@bergerrealty.com
Web: www.bergerrealty.com

Scan to see Property page.

