

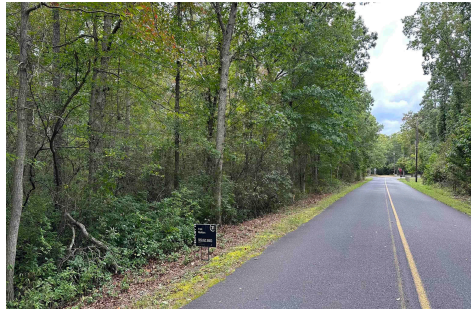


Berger Realty, Inc.  
3160 Asbury Avenue  
Ocean City, NJ 08226  
1-877-237-4371 / 609-399-0076  
info@bergerrealty.com



165 Fourth, Estell Manor, NJ, 08319

Price \$29,900.00



#### PROPERTY DETAILS

Total Rooms	
Bedrooms	0
Baths Full	0
Baths Half	0
Year Built	
Type	
Block Number	21
Listing #	590299
Taxes	637.00

#### COMMENTS

*5 Acre wooded lot in desirable Estell Manor. Lots of privacy and still a short distance to the beach. There are wetlands that will likely require the home to be located closer to the corner. Priced low as Buyer responsible for all approvals....*

#### PROPERTY FEATURES

#### CONTACT



Ask for Tara Cruser-Moss  
Berger Realty Inc  
3160 Asbury Avenue, Ocean City  
Call: 609-317-5396  
Email to: tcm@bergerrealty.com

Scan to see Property page.

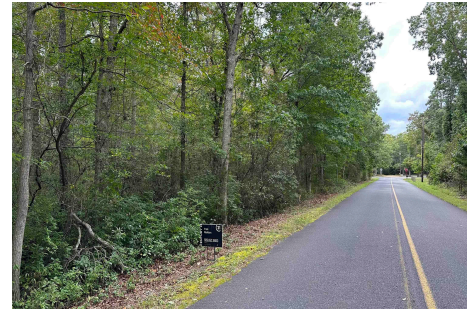


Berger Realty, Inc.  
3160 Asbury Avenue  
Ocean City, NJ 08226  
1-877-237-4371 / 609-399-0076  
info@bergerrealty.com



165 Fourth, Estell Manor, NJ, 08319

Price \$29,900.00



#### PROPERTY DETAILS

Total Rooms	
Bedrooms	0
Baths Full	0
Baths Half	0
Year Built	
Type	
Block Number	21
Listing #	590299
Taxes	637.00

#### COMMENTS

*5 Acre wooded lot in desirable Estell Manor. Lots of privacy and still a short distance to the beach. There are wetlands that will likely require the home to be located closer to the corner. Priced low as Buyer responsible for all approvals....*

#### PROPERTY FEATURES

#### CONTACT



Ask for Tara Cruser-Moss  
Berger Realty Inc  
3160 Asbury Avenue, Ocean City  
Call: 609-317-5396  
Email to: tcm@bergerrealty.com

Scan to see Property page.

