

Berger Realty

Since 1926



Berger Realty, Inc.
3160 Asbury Avenue
Ocean City, NJ 08226
1-877-237-4371 / 609-399-0076
info@bergerrealty.com

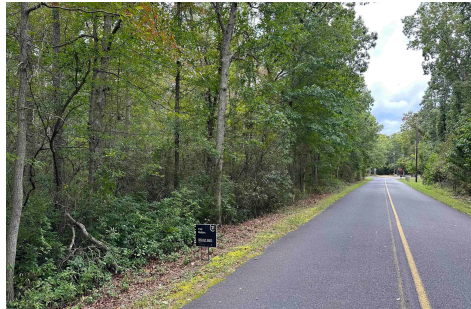


165 Fourth, Estell Manor, NJ, 08319

Price \$29,900.00

PROPERTY DETAILS

Total Rooms	
Bedrooms	0
Baths Full	0
Baths Half	0
Year Built	
Type	
Block Number	21
Listing #	590299
Taxes	637.00



COMMENTS

5 Acre wooded lot in desirable Estell Manor. Lots of privacy and still a short distance to the beach. There are wetlands that will likely require the home to be located closer to the corner. Priced low as Buyer responsible for all approvals....

PROPERTY FEATURES

CONTACT



Ask for Dori Adams
Berger Realty Inc
3160 Asbury Avenue, Ocean City
Call: 609-602-2545
Email to: doa@bergerrealty.com

Scan to see Property page.



Berger Realty

Since 1926



Berger Realty, Inc.
3160 Asbury Avenue
Ocean City, NJ 08226
1-877-237-4371 / 609-399-0076
info@bergerrealty.com

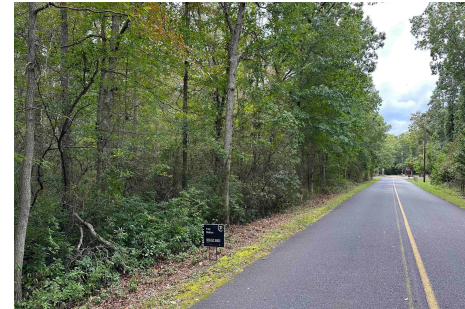


165 Fourth, Estell Manor, NJ, 08319

Price \$29,900.00

PROPERTY DETAILS

Total Rooms	
Bedrooms	0
Baths Full	0
Baths Half	0
Year Built	
Type	
Block Number	21
Listing #	590299
Taxes	637.00

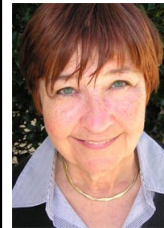


COMMENTS

5 Acre wooded lot in desirable Estell Manor. Lots of privacy and still a short distance to the beach. There are wetlands that will likely require the home to be located closer to the corner. Priced low as Buyer responsible for all approvals....

PROPERTY FEATURES

CONTACT



Ask for Dori Adams
Berger Realty Inc
3160 Asbury Avenue, Ocean City
Call: 609-602-2545
Email to: doa@bergerrealty.com

Scan to see Property page.

