

Berger Realty

Since 1926



Berger Realty, Inc.
3160 Asbury Avenue
Ocean City, NJ 08226
1-877-237-4371 / 609-399-0076
info@bergerrealty.com



202 Burning Tree Blvd, Absecon, NJ, 08201

Price \$300,000.00

PROPERTY DETAILS

Total Rooms	
Bedrooms	0
Baths Full	0
Baths Half	0
Year Built	
Type	
Block Number	227.01
Listing #	590294
Taxes	4715.00

COMMENTS

Discover the perfect canvas for your custom home on this spacious .8-acre (35,000 sq ft) lot, measuring 200' x 175', located in the beautiful and serene community of Absecon, NJ. Nestled among elegant custom-built homes, this rare find offers sweeping, unobstructed views of Atlantic City's skyline and the peaceful waters of Absecon Bay. Zoned R-1, this lot could be id...

PROPERTY FEATURES

CONTACT



Ask for Margarita Kobilianets
Berger Realty Inc
3160 Asbury Avenue, Ocean City
Call: 609-674-3417
Email to: mak@bergerrealty.com

Scan to see Property page.



Berger Realty

Since 1926



Berger Realty, Inc.
3160 Asbury Avenue
Ocean City, NJ 08226
1-877-237-4371 / 609-399-0076
info@bergerrealty.com



202 Burning Tree Blvd, Absecon, NJ, 08201

Price \$300,000.00

PROPERTY DETAILS

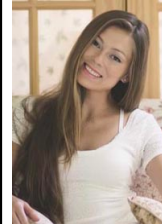
Total Rooms	
Bedrooms	0
Baths Full	0
Baths Half	0
Year Built	
Type	
Block Number	227.01
Listing #	590294
Taxes	4715.00

COMMENTS

Discover the perfect canvas for your custom home on this spacious .8-acre (35,000 sq ft) lot, measuring 200' x 175', located in the beautiful and serene community of Absecon, NJ. Nestled among elegant custom-built homes, this rare find offers sweeping, unobstructed views of Atlantic City's skyline and the peaceful waters of Absecon Bay. Zoned R-1, this lot could be id...

PROPERTY FEATURES

CONTACT



Ask for Margarita Kobilianets
Berger Realty Inc
3160 Asbury Avenue, Ocean City
Call: 609-674-3417
Email to: mak@bergerrealty.com

Scan to see Property page.

